

Mayoral Forum's **Plan for Canterbury**

2023-2025



CANTERBURY
Mayoral Forum

*Ko Ngā Tiritiri o te Moana ngā maunga
Ko ngā wai huka ngā awa I rere tonu mai
Ko Ngā Pākihi Whakatekateka o
Waitaha te whenua
Ko Marokura, ko Mahaanui, ko
Araiteuru ngā tai
Tihei mauri ora!*

*The Southern Alps stand above
The snow-fed rivers continually
flow forth
The plains of Waitaha extend out
To the tides of Marokura,
Mahaanui and Araiteuru
Behold there is life!*

Who we are

The members of the Mayoral Forum are the mayors of the ten territorial authorities in Canterbury and the chair of the regional council (Environment Canterbury), mandated by the Canterbury Local Authorities' Triennial Agreement.



*Back row: Peter Scott, Chair Environment Canterbury; Dan Gordon, Mayor Waimakariri District Council; Sam Broughton, Mayor Selwyn District Council; Neil Brown, Mayor Ashburton District Council; Craig Mackle, Mayor Kaikōura District Council.
Front row: Craig Rowley, Mayor Waimate District Council; Anne Munro, Mayor Mackenzie District Council; Marie Black, Deputy Chair Canterbury Mayoral Forum, Mayor Hurunui District Council; Nigel Bowen, Chair Canterbury Mayoral Forum, Mayor Timaru District Council; Gary Kircher, Mayor Waitaki District Council; Phil Mauger, Mayor Christchurch City Council.*

Ki uta ki tai / From the mountains to the sea

Canterbury is a great place to visit, live, study, work and do business.

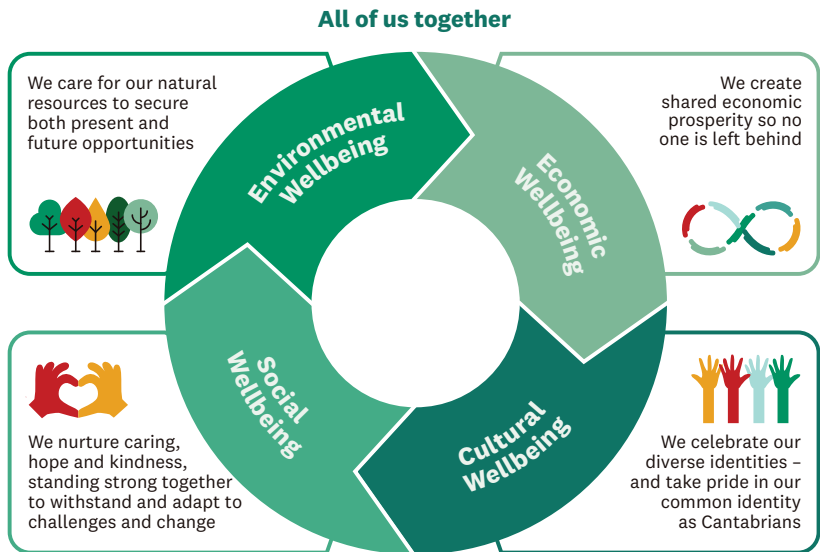
The Canterbury Mayoral Forum's Plan for Canterbury 2023-2025 summarises the interests and priorities of local government leaders for Cantabrians, focused on **three priority areas**.



The Plan provides a basis for conversation and partnership with Ngāi Tahu, Government, and the business, community and volunteer sectors. Where our interests align, we can work together for the good of all.

Vision and values

Our vision for Canterbury is sustainable development with shared prosperity, resilient communities and proud identity.



Mō tātou, ā, mō kā uri ā muri ake nei / For us and our children after us.

Priority actions

Our three immediate priorities are:

Advocating with Government for permanent co-investment in flood protection to protect local and national assets and contribute to more sustainable regional economies.

Flooding is the most common natural hazard in New Zealand, and Canterbury's 78,000km of rivers and streams puts us at substantial risk of major flooding events. Permanent co-investment in flood protection shifts the focus from disaster relief and recovery towards mitigation of flood risks, while reducing long-term costs.

Advocating with the Government for immigration and skills policies that work for Canterbury.

Canterbury has many natural advantages, significant infrastructure and a range of universities and research institutes, but our GDP per person lags the national average. To lift wages and incomes we need more skilled jobs and skilled workers to fill them.

Seeking to collaborate with Government to develop an integrated approach to transport funding and increase the level of funding available for Canterbury transport networks.

Our region's vast transport network provides connection and strongly influences economic development, supporting supply chains that are critical for getting our products to market. Current funding sources do not meet present or future transport network resilience requirements. It is estimated that an additional \$1 billion is required over the next 10 years.

For more detail on the Plan for Canterbury and why these are our immediate priority issues go to canterburymayors.org.nz/PlanforCanterbury.