

Agenda

Canterbury Policy Forum

Date	Friday 18 March 2016
Time	12.00pm (lunch) for 12.30pm (meeting commences)
Venue	Council Chambers, Selwyn District Council, 2 Norman Kirk Drive, Rolleston
Attendees	David Ward (Acting Chair, Selwyn), Angela Oosthuizen (Kaikōura), Hamish Dobbie (Hurunui), Geoff Meadows and Simon Markham (Waimakariri), Brendan Anstiss (Christchurch), Vincie Billante (Ashburton), Mark Low (Timaru), Toni Morrison (Mackenzie), Bede Carran (Waimate), Michael Ross (Waitaki)
In Attendance	Sean Rainey (Christchurch – Item 7), Hafsa Ahmed (Environment Canterbury – Item 6) Secretariat: Steve Gibling, Ronnie Cooper, Bernadette Sanders (Minutes)
Apologies	Bill Bayfield (Chair, Environment Canterbury), Jill Atkinson (Environment Canterbury)

Item	Person
1. Welcome, introductions and apologies	Chair
Housekeeping	
2. Confirmation of Agenda	Chair
3. Minutes from the previous meeting	
a. Confirmation of meeting Minutes, 29 January 2016	Chair
b. Action points	Secretariat
c. Regional governance meetings schedule	
Regional priorities	
4. CREDS update	Chair
5. Regulation and Regional Economic Development Strategy – update from Planning Managers Group	Geoff Meadows
Multiple council issues	
6. Annual Plan – approach to community engagement (verbal)	Chair
7. Freedom camping in Canterbury	Steve Gibling
8. OIA/LGOIMA procedures	Brendan Anstiss
9. Canterbury Councils joined-up response to the Resource Legislation Amendment Bill <i>Attachments: Matrix Canterbury councils' positions</i> <i>Canterbury Mayoral Forum submission 14 March 2016</i>	Geoff Meadows
10. Government initiatives – Canterbury engagement and responses <i>Attachment: MFE timeline - national direction projects</i>	Ronnie Cooper
11. Canterbury Mayoral Forum/Chief Executives Forum updates <i>Attachments: Three-year work programme</i>	Chair
Collaboration to build capability to provide effective local services	
12. Training and professional development (verbal)	Ronnie Cooper
General business	
13. Other matters identified	
14. Next meeting: Friday 6 May 2016	

Canterbury Policy Forum

Date: 29 January 2016
Time: 12.30pm
Venue: Selwyn District Council Chamber, 2 Norman Kirk Drive, Rolleston
Attendees: David Ward (Acting Chair, Selwyn), Carolyn Johns (Waimate), Toni Morrison (Mackenzie), Geoff Meadows (Waimakariri), Mark Low (Timaru), Brendan Anstiss (CCC), Rachel Vaughan (Kaikōura), Vincie Billante (Ashburton), Steve Gibling (ECan)
In Attendance: Murray Washington (Selwyn), Fabia Fox (Waimate), Katherine Wilson (MfE), Mike Hurley (MfE), Rowan Taylor (MfE)
Secretariat: Steve Gibling (ECan), Ronnie Cooper (ECan), David Bromell (ECan), Bernadette Sanders (ECan – Minutes)
Apologies: Bill Bayfield (Chair – ECan), Jill Atkinson (ECan), Bede Carran (Waimate), Judith Batchelor (Hurunui), Michael Ross (Waitaki), Simon Markham (Waimakariri), and Rachel Vaughan (Kaikōura) and Vincie Billante (Ashburton) for late arrival

The meeting commenced at 12.32pm.

1. Welcome, introductions and apologies

David Ward welcomed attendees to today's Forum and took a moment to acknowledge the contribution by Michelle Mitchell to the earthquake recovery process.

Apologies were noted and introductions took place around the room.

2. Confirmation of Agenda

The Agenda was confirmed, with the addition of a biodiversity update to take place under item 12 – Other matters.

3. Minutes from the previous meeting

a. Confirmation of meeting Minutes

The Minutes of the meeting held 25 September 2015 were accepted as a true and accurate record.

Carolyn Johns/Geoff Meadows
Carried

b. Action points

The action points were reviewed and updated. It was noted that the Service Delivery Review workshops had been well attended and that OAG has no current interest in this topic.

c. Regional governance schedule

The Forum was requested to ensure relevant meeting dates are diaried. The Canterbury Planning Managers Group (CPMG) April meeting has shifted to 8 April.

4. Canterbury Regional Economic Development Strategy update

David Bromell spoke to the information paper. The paper was taken as read. Of note:

- Ministers and government agency chief executives were updated prior to Christmas on CREDS developments taking place.
- The Digital and Visitor strategies are currently being confirmed.
- Resourcing remains an issue and although a Secretariat will be established, at the request of CMF, this will not commence until the new financial year. A discussion will take place at the Chief Executives Forum around resourcing through to 30 June 2016. Attendees were requested to ensure resourcing budget is made available in their council's 2016/17 financial year.

Areas where current resourcing across programmes could be utilised were briefly discussed, including the land transport plan and Christchurch's recent visitor strategy. The CREDS visitor strategy is well underway, and the regional strategy will align with Christchurch. Challenges around transport are focused on the strategic direction of transport and its role within the region, as well as creating a dataset across the region to enable consistent and informed decision-making. To that effect, the RLTP strategic context is currently being reviewed, with involvement from RTC.

Rachel Vaughan and Vincie Billante joined the meeting.

Resolved

That the Canterbury Policy Forum:

1. note progress in implementing the Canterbury Regional Economic Development Strategy (CREDS) since November 2015
2. seek opportunities to support lead Mayors and Chief Executives to implement and further develop CREDS work programmes
3. note that the Mayoral Forum has requested Environment Canterbury to host secretariat and executive support to the Mayoral Forum, Chief Executives Forum, Policy Forum and Planning Managers Group on an ongoing basis, funded from the regional council general rate from 1 July 2016.

David Ward/Brendan Anstiss
Carried

5. Local government regulation and the Canterbury Regional Economic Development Strategy – reports from Canterbury Planning Managers Group

Geoff Meadows spoke to the Agenda item, which was to identify opportunities where any unnecessary regulatory barriers could be addressed in particular areas of discussion in Canterbury, and referred to the two accompanying reports from Timaru District Council on Digital connectivity and Waimate District Council on Value-added production. A report from Kaikōura District Council on regulatory barriers to tourism is a work in progress. Thanks were extended to the councils involved for their support.

Key messages identified were relayed to the meeting, of note:

- no major regulatory barriers were identified in these areas
- some minor matters can be dealt with relatively easily
- any formal plan changes may be more complicated and costly
- the Government's proposed NPSs and NESs, and the proposed National Planning Template, are intended to establish greater consistency over time.

It was noted that any changes identified around potential plan changes will need to be taken through consultation processes with the community.

Recent work undertaken with Spark for the Canterbury Mayoral Forum has created positive benefits in terms of communication and engagement. David Ward requested all councils to revisit the press releases from Spark so that Canterbury communities can be advised around the roll out timeframe.

AP: All councils to update their communities around the Spark roll out timeframe.

After discussion it was agreed that a summary document on the three topics be prepared for the upcoming CEF. To expedite the receipt of information in Kaikōura it was suggested that individual contact be made. Geoff Meadows and David Bromell will prepare the report.

AP: Geoff Meadows and David Bromell to prepare summary report for Chief Executives Forum.

Resolved

That the Canterbury Policy Forum:

1. receive the attached reports from Timaru District Council on Digital connectivity, and from Waimate District Council on Value-added production
2. note that Kaikōura District Council has work-in-progress on surveying the tourist industry about perceptions of unnecessary regulatory barriers and inconsistency of regulation in tourism
3. recommend the completed reports from Timaru, Waimate and Kaikōura are included on the agenda for the Chief Executives Forum of 15 February 2016
4. note the reports have not had formal endorsement from the Canterbury Planning Managers Group, which does not meet until 19 February 2016, however, they have been endorsed out-of-session by the majority of CPMG representatives
5. discuss the key findings of the two reports and provide guidance to the CPMG on key messages to take through to the Chief Executives Forum and Mayoral Forum.

Geoff Meadows/Vincie Billante
Carried

6. Combined Infrastructure Strategies

Murray Washington spoke to the Agenda item and presented a review of Canterbury local authority Infrastructure Strategies. The review was requested by the CMF to provide consistent high quality infrastructure and levels of service across the region and to identify opportunities for collaboration over the next 30 years, focusing on the areas of water supply, sewerage, storm water drainage, flood protection and control works, roads and footpaths. Thanks were extended to each council for their prompt provision of information.

Key findings indicated that the programme of costs across Canterbury are dominated by Christchurch City Council and the earthquake rebuild, with a drop in the second half once this is complete. Overall there is a steady investment level. Current data available around inflation and population growth in Canterbury compared with Wellington, Waikato and Auckland requires confirmation.

Attendees were requested to review the attached report prepared by Waugh and provide feedback, no later than Friday 5 February 2016, around how it fits with the CREDS and whether it is fit for purpose, as well as how well it identifies collaboration and shared

services. A report will be prepared for the CEF before presentation to the CMF. The Waugh report will be emailed to all councils.

AP: Murray Washington to email the Waugh report to all councils.

AP: All councils to provide feedback on the Waugh report to Murray Washington by Friday 5 February 2016.

A request for the inclusion of historical information was made, however, it was noted that the request by CMF was for potential collaboration into the future. The architecture of infrastructure was noted as being different in terms of delivery and funding for all regions, however, the review would be used as a tool to identify collaboration opportunities and constraints. Further, it was noted that all S17 reviews include a review of infrastructure strategies.

7. LGOIMA policy and practice

David Ward spoke to the Agenda item and outlined issues arising in relation to the Official Information Act and Local Government Official Information and Meetings Act. The four main sources of information requests come from either political parties, media, serial writers/requests and genuine requests for information. The purpose of today's discussion was to identify how each council currently handles information requests and whether a standard procedure for responding and charging can be developed for sign off by the CEF.

Each council represented outlined their current standard procedure, and it was noted that a considerable amount of time goes into most information requests, with media taking priority in terms of information turnaround. Also of note was that most information requested is already available in the public domain via council websites. The CCC has a policy and charging schedule already in place, and uses the Act as a guideline for charge-out rates.

After a discussion, it was agreed that there were benefits in a set of standard principles for all councils to follow. In lieu of the establishment of a working group, Brendan Anstiss volunteered the CCC to take a lead on this topic and will share information from the council. In the meantime, all councils are requested to forward David Ward a copy of current response procedures, before Friday 5 February 2016, to enable a report for CEF on 15 February 2016, with a draft set of principles to be presented to CEF in April 2016.

AP: All councils to forward to David Ward current council procedures around official information requests.

AP: Brendan Anstiss/Christchurch City Council to take the lead on this topic once all information is available.

AP: David Ward to provide an information paper to the Chief Executives Forum, 15 February 2016, followed by a recommended set of principles for all councils on 4 April 2016.

Resolved

That the Canterbury Policy Forum:

1. note the issues arising in relation to the OIA for central government agencies
2. note the equivalent provision in the LGOIMA

3. agree that member councils of the Forum will provide their current council procedures to Selwyn District Council as a starting point for development of a region-wide approach for Canterbury councils to respond to LGOIMA requests.

David Ward/Rachel Vaughan
Carried

Don Chittock joined the meeting at 1.40pm.

8. Government initiatives – Canterbury engagement and responses

David Ward welcomed Katherine Wilson, Mike Hurley and Rowan Taylor to the meeting. Katherine Wilson spoke to the Agenda item and explained that the purpose of their attendance today was to outline the MfE programme over the next 18 months and look to identify opportunities for collaboration for Canterbury-wide responses as agreed for the proposals for national direction under the RMA and opportunities for responding to other policy initiatives.

Katherine gave an update on the Urban Development policy noting that most councils were advised in December 2015 of the first stage of consultation around scoping questions for this proposal. Comments on this preliminary phase are due by 5 February 2016. A second round of consultation will take place in June 2016 with submissions invited on the draft NPS. MfE is also extending invitations to planners and experts to attend workshops. MfE is considering how the NPS on Urban development will interact with other policies, including the policies on Freshwater management and Contaminants in soil. After 2017 MfE will consider how the NPSs and NESs will align with the National Planning Template proposed in the Resource Legislation Amendment Bill.

There was discussion of the timelines provided in the diagram attached to the Agenda paper. Katherine noted that the implementation phase is yet to be added for each project. It should be noted that the timeline will always be out of date and open to change as circumstances evolve. However, given the requirement of councils to advise public consultation and have the ability to provide adequate resourcing, Katherine advised that the next version of the timeline will be provided to the LGNZ Resource Managers Group meeting (3-4 March 2016) and will be sufficiently certain to enable effective resourcing decisions to be made up to approximately April 2017.

- *Aquaculture and natural hazards*: Possibility for consultation over the course of 2016, however, may be pushed out further with no public consultation taking place this year.
- *Freshwater management, Stock exclusion, Contaminants in soil, Air quality*: Likely for public consult in 2016. Stock exclusion and the provisions proposed in the RLA Bill will be linked in with the processes for Freshwater management.
- *Transport*: Possibility that this topic may pick up more quickly, but is subject to resourcing. Linkages between transport planning and urban development may be a reason for bringing transport forward and considering whether a transport NPS is required.
- *Biodiversity*: The overall shape of this process hasn't changed but this work will only proceed as fast as stakeholders agree. The timeframes may slip for discussions with the collaborative groups.
- In terms of policy development, Freshwater management, Stock exclusion and Pest control are almost complete. Biodiversity requires a collaborative group process, and Electricity transmission is ongoing.

- *Natural hazards:* Climate change issues will be dealt with in the work stream for the proposed NPS for Natural hazards. Non-statutory guidance on Coastal hazards and Liquefaction will be reviewed this year before developing a formal process.

Most consultations are scheduled to occur prior to September/October 2016. Ronnie Cooper and Nigel Corry (Greater Wellington Regional Council and Chair of the Resource Managers Group) will work with Katherine to review timings around the local government elections later in 2016 to help the provision of quality input from New Zealand local authorities. The CPMG, led by Geoff Meadows, will contribute to the development of Canterbury-wide submissions.

In relation to CPMG work on a shared Canterbury submission on the RLA Bill, it was noted that:

- the UDS is working on a response to the Productivity Commission discussion document on Better Urban Planning
- the timeframes are unmanageable for the CPMG to develop a submission to LGNZ on its Blue Skies discussion document.

AP: Ronnie Cooper and Geoff Meadows to continue working with Katherine Wilson to review opportunities for Canterbury councils' engagement and collaborative submissions.

David Ward thanked Katherine Wilson for her presentation on behalf of MfE. David noted that it is an ambitious programme and highlighted three key points for the Ministry to be aware of:

- questions around council capacities and the timeframes for council engagement, with a need for sufficient certainty to plan for and provide adequate resourcing
- questions around communities' capacities for engagement in processes, with a risk of 'consultation overload' given that councils have just undertaken processes for district, annual and long-term plans
- questions around the costs of eventual implementation which will need to be met by councils.

Resolved

That the Canterbury Policy Forum:

1. note the range of initiatives from central government relating to resource management, business growth, environmental legislation and planning systems
2. note the programme of consultation for proposed NPSs and NESs
3. discuss opportunities to engage with the Ministry for the Environment on the NPS and NES proposals
4. note the processes in place for providing shared Canterbury-wide responses to the proposals for NPSs and NESs
5. consider the opportunity to respond to the Local Government and Environment Select Committee on the Resource Legislation Amendment Bill
6. consider the opportunity to respond to Local Government NZ on their "blue skies" discussion document
7. consider the opportunity to respond to the Productivity Commission on their *Better Urban Planning* discussion document.

Mark Low/Carolyn Johns
Carried

9. Canterbury Mayoral Forum/Chief Executives Forum update

David Ward spoke to the Agenda item and advised that he is aware of Bill Bayfield establishing connections to ensure Canterbury will remain well connected with Wellington once Cera is disbanded (19 April 2016). Every endeavour will be made to ensure the current level of connectivity will remain.

Attendees were reminded that the A4 News pages following each Forum have been designed for distribution to key staff in the region's councils to ensure all relevant staff are aware of current activities and discussions.

Resolved

That the Canterbury Policy Forum:

1. note the activities of the CMF and CEF.

David Ward/Vincie Billante
Carried

10. Regional approach to managing natural hazard risk in Canterbury

Don Chittock spoke to the Agenda item and provided an update on the development of a regional approach to managing natural hazard risk around the region.

Work has progressed with workshops held in Timaru and Hurunui attended by planners and EMOs. Key focus areas include alignment, two-way communication, clarity of roles and responsibilities, and support of regional research. Next steps include councils meeting in 2016 and the agreement of a work programme by the end of the 2015/16 financial year.

That the Canterbury Policy Forum:

1. note progress to date and next steps
2. support the ongoing work of the group and its representatives in producing a regional approach to managing natural hazard risk as outlined in the project timeline.

Toni Morrison/Carolyn Johns
Carried

11. Pilot workshop for local authority policy advisors

Vincie Billante spoke to the Agenda item and acknowledged the input by Ronnie Cooper to the project.

The pilot workshop for new policy advisors was held in November 2015 at the Ashburton District Council and was attended by staff from nine Canterbury councils. Looking ahead, there is a need to identify as a policy forum what councils are looking at for future training and how the Secretariat can assist with supporting and planning professional development programmes. With that in mind, and to ensure momentum continues, councils are requested to notify the Secretariat of areas of professional development interest over the next 18 months, and target groups for workshops and other programmes. Any council bringing professional trainers in-house is encouraged to extend an invitation to other councils, where possible.

AP: All councils to notify the secretariat of areas of professional development interest over the next 18 months, and target groups for workshops and other programmes.

AP: Any council bringing professional trainers in-house is encouraged to extend an invitation to other councils, where possible.

Resolved

That the Canterbury Policy Forum:

1. note the successful Pilot Workshop for Canterbury councils' policy advisors
2. consider opportunities for future workshops for new and more experienced policy staff.

Vincie Billante/Brendan Anstiss
Carried

12. Other business

Regional approach to biodiversity

Don Chittock spoke to the Agenda item and provided an update on the regional approach to biodiversity, noting that to provide better biodiversity outcomes, ECan is working collectively with Canterbury councils and other partners to ensure the process is community led. The CWMS is being used as a collaborative process to make that happen.

Last year's issue of vegetation clearance has led to regular discussions with DOC, LINZ and MPI, the result of which is an increase in understanding within each agency and the development of a strategic approach for regional biodiversity. Current reviews of biodiversity chapters and the RMA are providing opportunities for learning and information sharing.

It was noted that the ECan Commissioners have a high focus on biodiversity this year and are keen to ensure that, by mid-2016, there is a clear and strong work programme established.

13. Next meeting

Friday 18 March 2016.

There being no further business, the meeting closed at 2.35pm.

Action Points

Canterbury Policy Forum

As at 18 March 2016

Items will be removed once complete.

Date	Subject	Actioned by	Deadline	Status
29.10.14	Mayoral Forum: Keep CPF informed.	Bill Bayfield	Ongoing	
29.01.15	LTPs/infrastructure strategies: Murray Washington to email Waugh report to all councils.	Murray Washington	1 February 2016	Complete. Waugh report on Infrastructure Strategies was emailed to councils.
29.01.15	All councils to provide feedback to Murray Washington on Waugh report.	Forum	5 February 2016	Complete. Feedback was received and a report was presented to the Chief Executives Forum, 15 February 2016.
26.06.15	Online voting: Provide feedback, when available, on the outcome of SDC's use of the online voting system for the 2016 local government elections.	David Ward	Ongoing	Eight councils have registered and meetings taking place with DIA and relevant election companies. SDC now relaying messaging to community, ECan and DHB candidates around online campaigning and voting.
26.06.15	Training requirements: Collaborating to get better results/Workshop for new policy advisors: Secretariat to request training requirements with member councils early in 2016.	Secretariat	March 2016	Request for training requirements circulated 29 February 2016. Refer Agenda item 12.
29.01.16	All councils to notify the secretariat with areas of professional development interest, and who to target this at over the next 18 months.	Forum	Ongoing	
29.01.16	Any council bringing professional trainers in-house are encouraged to extend an invitation to other councils, where possible.	Forum	Ongoing	
25.09.15	Canterbury Regional Economic Development Strategy All councils to provide an update to David Bromell outlining how the work programme relating to their respective mayor/council will be put in place and resourced.	Forum	30 October 2015	All councils to consider resource implications in 2016/17 Annual Plans. Refer Agenda item 4.
25.09.15	Local government regulation and CREDS: Support the Planning Managers Group to report to CEF on opportunities to address unnecessary regulatory barriers and improve consistency of regulation in relation to digital connectivity, value-added production and tourism in Canterbury (CREDS).	Timaru, Waimate, Kaikōura, Christchurch	February 2016	29.01: Tourism paper yet to be finalised. Refer Agenda item 5.

Date	Subject	Actioned by	Deadline	Status
29.01.16	All councils to update their communities around the Spark roll out timeframe.	Forum	ASAP	
29.01.16	Geoff Meadows and David Bromell to prepare summary report for Chief Executives Forum on all three reports.	David Bromell, Geoff Meadows	15 February 2016	Report complete. CEF discussion deferred to April 2016.
25.09.15	MBIE 2015 Regional Economic Activity report: Simon Markham to contact the University regarding opportunities for research on the migrant workforce in the region.	Simon Markham	ASAP	
25.09.15	Circulate to the Policy Forum the full MBIE June review and rebuild modelling presentation once it has been cleared for circulation by the Minister.	Simon Markham	ASAP	
29.01.16	OIA/LGOIMA: All councils to forward to David Ward current council procedures around official information requests.	Forum	ASAP	Complete. All councils provided feedback which has been collated and passed on to Brendan Anstiss. Refer Agenda item 8. This topic was not discussed at Feb CEF.
29.01.16	Brendan Anstiss/Christchurch City Council to take the lead on this topic once all information is available.	Brendan Anstiss	15 February 2016	
29.01.16	David Ward to provide an information paper to the Chief Executives Forum, 15 February 2016, followed by a recommended set of principles for all councils on 4 April 2016.	David Ward	4 April 2016	
29.01.16	Government initiatives – NES/NPS: Ronnie Cooper and Geoff Meadows to continue working with Katherine Wilson to review opportunities for Canterbury councils' engagement and collaborative submissions.	Ronnie Cooper, Geoff Meadows	Ongoing	Refer Agenda item 10.

Week Beginning	Canterbury Policy Forum	Canterbury Chief Executives Forum	Canterbury Mayoral Forum	Canterbury Planners Forum	RTC	Zones 5 and 6	South Island Strategic Alliance	Recovery Strategy Advisory Comm	Regional Sector Group	SOGLM
	Chair: Bill Bayfield	Chair: Jim Palmer	Chair: Dame Margaret Bazley	Chair: Geoff Meadows	Chair: Rex Williams	Chair: Richard Kempthorne	Chair: Richard Kempthorne	Chair: Bill Wasley	Chair: Fran Wilde	Chair:
	Secretariat: ECan (Berny Sanders)	Secretariat: ECan (Berny Sanders)	Secretariat: ECan (Louise McDonald)	Secretariat: Brett Aldridge	Secretariat: Therese Deval	Secretariat: TDC (Pamela White)	Secretariat: TDC (Pamela White)	Secretariat: Caroline Hart	Secretariat: LGNZ (Clare Wooding)	Secretariat: Louise Boland
04.01.16										
11.01.16										
18.01.16										
25.01.16	Fri 29.01.16									
01.02.16										
08.02.16										
15.02.16		Mon 15.02.16		Fri 19.02.16						
22.02.16			Fri 26.02.16		Fri 26.02.16					
29.02.16										
07.03.16										
14.03.16	Fri 18.03.16									
21.03.16										
28.03.16										
04.04.16		Mon 04.04.16		Fri 8.04.16						
11.04.16										
18.04.16			Fri 22.04.16		Fri 22.04.16	19-22.04.16 (Chathams)	21.04.16 (Chathams)			
25.04.16										
02.05.16	Fri 06.05.16									
09.05.16										
16.05.16										
23.05.16										
30.05.16		Mon 30.05.16: BIM								
06.06.16										
13.06.16										
20.16.16			Thurs 23/Fri 24.06.16: CREDS and BIM		Fri 24.06.16					
27.06.16										
04.07.16										
11.07.16				Fri 15.07.16						
18.07.16										
25.07.16										
01.08.16										
08.08.16	Fri 12.08.16									
15.08.16										
22.08.16										
29.08.16		Mon 29.08.16								
05.09.16							Sept or Nov tbc			
12.09.16				Fri 16.09.16						
19.09.16										
26.09.16										
03.10.16										
10.10.16										
17.10.16										
24.10.16										
31.10.16		Mon 31.10.16								
07.11.16						07.11.16	Sept or Nov tbc			
14.11.16										
21.11.16			Fri 25.11.16		Fri 25.11.16					
28.11.16	Fri 02.12.16									
05.12.16										
12.12.16										
19.12.16										
26.12.16										

Canterbury Policy Forum

Item 4

Date: 18 March 2016

Presented by: Chair

Canterbury Regional Economic Development Strategy – update

Purpose

This paper provides an update on implementation of the Mayoral Forum's Canterbury Regional Economic Development Strategy (CREDS).

Recommendations

That the Canterbury Policy Forum:

- 1 **note** progress in implementing the Canterbury Regional Economic Development Strategy (CREDS) since November 2015
- 2 **seek opportunities** to support lead Mayors and Chief Executives to implement and further develop CREDS work programmes.

CREDS developments

Canterbury Digital Strategy 2016

- 1 At its meeting on 26 February 2016, the Canterbury Mayoral Forum approved the Digital Strategy. This strategy has been developed collaboratively with Connected Canterbury (the Canterbury Digital Leadership Forum which includes Aoraki Development Business and Tourism, Canterbury Development Corporation, Canterbury Employers' Chamber of Commerce, Enable Networks, Enterprise North Canterbury, Environment Canterbury, Grow Mid-Canterbury, Microsoft and Selwyn District Council).
- 2 The Mayoral Forum also agreed to support an initiative to invite a closer relationship – via a Canterbury Digital Accord – with Crown Fibre Holdings Ltd (CFH), to achieve the CREDS objective of a 'fully connected Canterbury'. CFH is now responsible for deployment of the Ultrafast Broadband II, Rural Broadband Initiative II and Mobile Black Spot Fund work programmes.

Regional Visitor Strategy

- 3 The Mayoral Forum is in the process of finalising a whole-of-region Visitor Strategy, focused on recovering market share following the 2010-11 earthquakes, creating employment opportunities and growing regional GDP. Around 33,000 Canterbury jobs are generated by tourism, with domestic tourism expenditure in Canterbury of \$1,770 million and international tourism expenditure of \$960 million in the year to March 2015.
- 4 A new direct route to Christchurch from Guangzhou on China Southern Airlines reinforces Christchurch City's role as a destination and gateway to the Canterbury

region and South Island. The route is estimated to increase tourism spending in Canterbury alone by more than \$100 million per year. At its meeting on 26 February the Mayoral Forum welcomed Jin Zhijian, Consul-General, and Liu Lian, Consul, from the People's Republic of China, who advised that New Zealand is now in the top ten travel destinations for people from China.

The Case for Canterbury

- 5 At its 26 February 2016 meeting the Mayoral Forum also considered a proposal for a survey to inform the development of a campaign to attract people to Canterbury. Workshops in late 2015 agreed that there is a need to articulate and tell a compelling story about our region – to ourselves within Canterbury, to the rest of New Zealand, and to the world.

Regional Transport

- 6 Environment Canterbury is currently updating the front section of the Canterbury Regional Land Transport Plan. This section sets out the strategic framework for the Plan including issues and challenges. Environment Canterbury is currently consulting stakeholders on the draft text of the update.
- 7 The key present and future issues and challenges set out in the current draft are:
 - Providing a range of transport and non-transport options to ensure people can access what they need in the way of goods, services and activities
 - Supporting freight growth by taking an integrated multi-modal approach
 - Developing the transport system to safely support domestic and international visitor growth
 - Ensuring transport options are affordable, particularly given likely funding constraints
 - Managing private vehicle traffic growth to reduce the economic cost of delays and ensure accessibility is maintained
 - Improving road safety for all road users
 - Ensuring transport makes a positive contribution to population health
 - Maintaining and improving levels of access and mobility in an environmentally sustainable manner
 - Managing network security through minimising the risk of disruption by natural hazards on key regional and inter-regional transport routes
 - Meeting the transport needs of dispersed communities and ensuring future land use development allows social and economic needs to be met most efficiently and affordably
 - Ensuring the network is resilient to energy supply and fuel price volatility, moving toward a system that is less reliant on oil
 - Managing the transport impacts of anticipated population change

- Taking advantage of iterative technological advances and managing disruptive technologic advances
- Managing traffic issues result from earthquake impacts (in particular, land use change).

Attracting Investment to Canterbury

- 8 The CREDS reference group are considering investment in tourism infrastructure across Canterbury. Regional collaboration is required, and local government can assist with:
- developing a regional business case to clarify opportunities and provide confidence to potential large scale investors
 - identification of appropriate, commercially viable sites
 - providing a level of detail around district plans and consenting
 - supporting the development of business cases with information local authorities hold or can access
 - setting expectations on local government's roles.

Education and training for a skilled workforce

- 9 This work stream has focused on:
- advocacy to central government for a system to track young school leavers
 - an application to DairyNZ for migrant workers training and seeking agreement from Immigration NZ to extend this
 - the need for more Chinese language teaching across the region.

Newcomer and migrant settlement

- 10 This work stream has focused on scoping the resourcing need for the region and allocating resourcing in councils' Annual Plans.

Value-added production / Freshwater management and irrigation infrastructure

- 11 A meeting this week with Dame Margaret Bazley will consider the relationships between these two work streams.

Canterbury Policy Forum

Item 5

Date: 18 March 2016

Presented by: Geoff Meadows

Regulation and Regional Economic Development Strategy

Purpose

To provide an update of progress in response to the request from the Policy Forum of 12 October 2015 for the Canterbury Planning Managers Group (CPMG) to report to the Chief Executives Forum in February 2016 on opportunities to address unnecessary regulatory barriers and improve consistency of regulation in relation to digital connectivity, value-added production and tourism in Canterbury.

Recommendations

That the Policy Forum

- 1 **note** that the reports from Timaru on digital connectivity, and from Waimate on value-added production, were formally endorsed by the Canterbury Planning Managers Group (CPMG) on 19 February 2016
- 2 **note** that the Chief Executives Forum, at their meeting on 15 February 2016, deferred consideration of the regulatory barriers report pending completion of the tourism component from Kaikōura District Council
- 3 **note** that the results of a survey of tourism interests and a preliminary draft report have been circulated amongst staff from Kaikōura, Christchurch, Environment Canterbury, and the chair of the CPMG for comment, and that the report and findings need further work before circulating more widely.

Background

- 1 Kaikōura District Council staff (assisted by Christchurch City Council staff) surveyed the tourism industry in Canterbury to glean perceptions about regulatory barriers from a tourism perspective. Canterbury's ten regional and district tourism organisations were asked to complete the survey and provide links to key tourism businesses which could also be surveyed. A total of 62 survey responses were expected. Nine of the ten tourism organisations responded to the survey; only 16 tourism providers responded.
- 2 A summary of the responses is attached (Appendix 1). Although a preliminary draft report from Kaikōura district has been prepared, more detailed analysis is required of the survey results to synthesise responses and identify real regulatory barriers.
- 3 The preliminary draft report from Kaikōura District Council staff identified further investigation is required in the areas of freedom camping, liquor licencing and signage. These areas will be further explored and reported to the next CPMG on 8 April 2016.

Appendix 1: Questions and responses

Survey Results RTO

1. Are there any good rules that you would like to see Canterbury-wide?

- I don't have a business so I am not familiar with the RULES of a business
- Ability to track all compliance work remotely for the businesses
- Rules about freedom camping, parking duration and fees, and liquor ban areas being extended and better enforced
- A Canterbury App that links to GPS both local and rental cars. In case of international visitors each time vehicle reminded to keep left. More consistent advisory signs-all the same Canterbury message Less speed

2. Do local tourism businesses talk to you about specific local government regulations that impact **NEGATIVELY** on the success of their businesses?

77% Yes, 33% No.

3. Which one?

- Liquor licensing
- Inconsistent liquor legislation throughout region
- Freedom Camping bylaws Signage bylaws Business Development issues
- Freedom Camping
- signage
- There needs to be less red tape and regulations regarding consent process for development
- Working VISA issues with gaining good quality staff for a longer period of time.

4. WHY and HOW does it cause negative impacts?

Liquor licensing

- At events such as farmers markets and shows where small wineries have to pay huge fees to be able to do tasting. It's not worth them going
- Confusion re hours and sales, particularly the difference between supermarkets and hospitality.

Freedom camping

- Laws too tight sometimes, CCC hard to communicate with, CCC making laws in their office but not in touch at a grass roots level or know what is really going on on the ground in the community
- Moves people away from main urban areas and creates major image concerns due to poor behaviour.

Signage

- The current rules are confusing to some businesses which gives a negative impression of council, e.g. can't get anything done, council doesn't want to help. The rules are perceived as being restrictive, e.g. size of sign, by our rural businesses and because of having a lot of state highway it is difficult to get approval from Transit. Some have reported a loss of income due to lack of signage.

Red tape

- Cost and time it takes developers to get through the red tape.

Visa issues

- Having to re-train staff, advertising etc

5. If improvements can be made, what are the improvements?**Liquor licensing**

- create a standard fee across Canterbury - preferably more similar to the Christchurch fees as they seem to be the cheapest
- Standardise as much as possible either regional or national. With some flexibility

Freedom camping

- Give the Community Board more power. Bring decision making back to more community, grass roots level
- Better enforcement and clearer guidelines for what is acceptable and what is not.

Signage

- making it easier for people to understand the rules, e.g. break it down so it's really clear on what the rules are so things can't be interpreted in multiple ways.

Red tape

- This would need to be discussed by effected parties.

Visa issues

- No response given.

6. Please list below ONE other Council activity besides regulations that affects the success of local tourism businesses and tell us why, e.g. quality of Council infrastructure such as roads, footpaths, water supplies, storm water and sewage, investment in events, cultural activities, etc:

- Freedom camping issues which lead onto infrastructure: lack of toilets, rubbish bins, parking, signage. Being able to isolate an area that is available to self-contained vehicles is the starting point - we can't get angry at freedom campers leaving rubbish and parking wherever until we actually have somewhere for them to move to
- The Design and Appearance Group in Akaroa needs to have a business owner on the group and not only Civic Trust members as they are not interested in growth and development but in keeping things the same. Good for keeping the historic integrity of the town, but not good for business development
- freedom campers and perceived lack of support for events
- Provision and state of public toilets
- Quality of secondary roads combined with very poor State Highway 1 standards. Plus advisory signs that cause confusion, or placed too late for effectiveness
- Infrastructure and investment.

7. Please list below any wider (regional or central) government regulations that impact negatively on the success of local tourism businesses and why:

- Compliance costs in general, e.g. health and safety legislation being too onerous for smaller operators
- When building new or refurbishing "nitration" at regional level of say H and S, food health hygiene can cause cost over runs, confusion and in some cases Hospitality feels intimidated by "official" stance
- Costs and time involved to get new tourism development initiatives across the line.

- regulations like the new Border Clearance Levy. additional levies like this example can be negative as it can be the decision between visiting New Zealand or somewhere 'cheaper' which has a flow on effect to tourism businesses outside of main centres.

Survey Results Local Tourism Providers & Ngai Tahu

Are there any good rules that you would like to see Canterbury-wide?

- Can't think of any!
- None that I can think of right now
- No
- As we operate south island wide and across all the Canterbury councils. We find inconsistency in fees for marquees, interpretation/application of liquor licensing rules varies, it would be great to have a cohesive, consistent approach to these.
- Consistency especially when it comes to requirements for insurances and appropriate licences
- All business being treated the same regardless of location. Not one rule for one and different for someone else
- Standardising rules on signage across the district.

Are you aware of any specific local government regulations that impact NEGATIVELY on the success of your business?

57% Yes, 43% No.

Which one

- Liquor licensing and general managers fees
- Sale and Supply of Alcohol Act 2012
- Inability for local government to accommodate freedom campers
- Signage rules on major roads
- Signage - Waimakariri insists that you can only put signage on the property where the business is conducted - unless you jump through a number of hoops/forms/rather steep fees despite being able to show land owner permission
- It is hard to pick between the Building act and the Resource Management Act.
- Development Contribution charges, Resource Management Act, rates .

WHY and HOW does it cause negative impacts?

Liquor licensing

- Increased annual costs for business and lack of motivation or incentive for staff to want to upskill and improve to duty manager levels with costs of obtaining LCQ followed by managers certificates being out of reach to many, unless employers pay, with no guarantee staff will be long-term employees
- Restriction that we are unable to charge a small price for supplying tastings of wine, i.e. under 60mls. At the moment they are complimentary. Many small cellar doors and businesses like ours are unable to provide visitors with a sampling of wine, to help encourage purchases and discussion of our wine region.

Freedom camping

- Makes a big contributor to the tourism economy feel unwelcome.

Signage

- This makes putting up billboards rather cost prohibitive
- People cannot find us even with GPS.

RMA and Building Act

- Both of these Acts make even simple tasks complex, the system seems unable to differentiate between say putting a sink into a unit and building a house

Rates

- By paying excessive rates I am not able to market or invest in my business as I should.

If improvements can be made, what are the improvements?

Liquor licensing

- Consistency district wide with access, liquor bans, smoking bans, licensed areas and discretionary conditions of LAP's. Consistency of advice from council when talking with planning & building units
- To allow Off Licence premises to charge for tastings of wine, i.e. tastings only, not "sell by the glass", to allow businesses to at least cover their costs in doing so.

Freedom camping

- Improve facilities toilets, dump stations, rubbishy bins.

Signage

- A more realistic fee structure.
- Just a simple direction sign pointing to us off the Main North Road would save a lot of confusion, especially with our Chinese clients.

RMA and Building Act

- Indemnify the Councils, then we could get back to all care no responsibility oversight, I still want the building inspector to come around and check on the builder but the Council should not be able to be sued when there is an issue down the track. This would help reduce the ridiculous quantities of paper, time and expense incurred by the Councils for even small jobs. It is not the Councils fault that they have to arse cover at every step it's the regulations they are working under. Similarly as I operate as a Specified Departure in a Residential Zone even minor works require a Planning Consent. The \$800 minimum fee to walk in the door is bad enough but the time and effort required to do the paper work is depressing. As the property is on two separate titles often we are required to pay up the whole fee more than once. Once upon a time we had a very good working relationship with the Timaru District Council (I try very hard to maintain a good one still) and I couldn't understand why many of my peers in other areas often did works without consents or tried to circumvent the regulations (e.g. calling built cabins a caravan). Increasingly I sympathise, my heart just sinks when I have to initiate the process of making some small improvement for my guests. The current mania for "accountability" has just created an inefficient and expensive paper trail of arse covering with no apparent improvement in the quality of outcomes.

Rates

- Spread the load, as a business I employ locals and use local business and suppliers so we all benefit but not all contribute.

Please list below ONE other Council activity besides regulations that affects the success of local tourism businesses and tell us why, e.g. quality of Council infrastructure such as roads, footpaths, water supplies, storm water and sewage, investment in events, cultural activities, etc:

- Having the high standard of sporting facilities here in Timaru increases levels of repeat customers attending events and coming back for family holidays, along with other events that draw people into town such as New Years Eve fireworks
- Pretty happy overall. Would be very helpful to see the Cruise Ships back into Lyttelton as this was a major contributor to our business. Also the Convention Centre.
- Availability and accessibility of information for visitors - domestic or international. The separate District Tourism Organisations all have their own unique identity and way of promoting their region - some do it well, some don't. Christchurch Canterbury Tourism / Convention Bureau need to appreciate that Christchurch is the gateway, Canterbury is the destination. It is the regions that have continued to attract visitors despite the lack of infrastructure and attractions post 2010/2011.
- Road signage to encourage foreign drivers' road etiquette.
- The quality of local infrastructure is incredibly important in contributing to the visitor experience in an area. For example are there adequate public toilets that are clean and available in the most appropriate places, is the signage clear and easy to follow, is the street light adequate in the most frequented areas that are walked by tourists at night, is the overall appearance of the town area attractive and cared for, etc.
- River condition for swimming
- Council investment in sporting and cultural infrastructure is very important to my business as it attracts events which bring us guests all year round.
- Lack of investment in areas that produce the revenue to the council. Akaroa is in a state of disrepair. footpaths, council facilities all council buildings, roads, drainage are all substandard
- Promotion of our region to wholesale trade and media, involving as many businesses as possible in famils and visits by other regional organisations, businesses, media etc.
- Financial support for RTOs is critical for regional destination marketing to be done.

Please list below any wider (regional or central) government regulations that impact negatively on the success of local tourism businesses and why:

- Mondayisation of public holidays!!! Has led to a massive level of public confusion about which day the holiday is recognised on, as it is different for a 7 day a week business compared to a Monday-Friday business. The costs of paying time and a half as well as a day in lieu are staggering and for many are basically equal to that day's trading revenue
- Tourism sector being disadvantaged by employment laws, e.g. public holiday Mondayisation day-forcing tourism businesses to close on public holidays
- Having to complete log books for our bus drivers for a seven minute transfer from our operating base to the departure point for our boats. Easter trading hours - this needs to be clarified and established for the good of the tourism industry. Being rated for ACC with the highest levy category when our business has a cross section of business activities making up one business. The cost of liquor licencing which is exorbitant for a daytime trading café
- Just major highway signage issues really
- Lack of resources to District Tourism Organisations which are CCOs - this is both man power and financial, possibly due to a failure to recognise the true broader economic benefit of tourism to a region. Be it in longer stays, repeat stays, greater per person spend, or uncovering business opportunities
- OSH is occupying all our minds at present, it would be nice to think the department will show restraint while testing out the new laws in court (money should be set aside for both sides so nobody gets ruined while the lawyers of both sides argue themselves to a standstill (think the Berrymans)). The free camping thing is not going away either, while we face all the complexity and costs to operate (some of which I outlined earlier) Councils are being pressured into using ratepayer money to provide

these facilities for a group of people who want us to subsidise their holidays and lifestyle

- H&S Act, Building Code, RMA
- Quality of State Highway 1 - Poorly maintained roading network provides a poor image to visitors. 2) Access to quality high speed internet - Poor connectivity for visitors and local business impacting on the visitor experience and the productivity of businesses.

Canterbury Policy Forum

Item 7

Date: 18 March 2016

Presented by: Steve Gibling, Secretariat

Freedom camping in Canterbury

Purpose

The purpose of this paper is to discuss and agree opportunities for a joined-up approach in Canterbury to address freedom camping issues.

Recommendations

That the Canterbury Policy Forum:

- 1 **note** current issues relating to freedom camping in Canterbury
- 2 **discuss and agree** to progress a joined-up approach to address freedom camping issues by establishing a working group from Canterbury councils.

Background

- 1 Canterbury councils recognise and welcome the growth of tourism in the region. The related Regional Visitor Strategy is a work programme of the Canterbury Regional Economic Development Strategy (CREDS) and seeks to maximise the regions collective resources for a growth in this specific sector.
- 2 The region has been facing first-hand the growing impact of rubbish and human waste with increased freedom campers and tourists in non-self-contained vehicles. Particularly Banks Peninsula, Kaikōura, and Mackenzie have been facing significant issues lately with rising numbers of freedom campers. The issues have received media attention and are now gaining the attention of central government.
- 3 The Department of Internal Affairs is currently surveying councils on freedom camping infringements under the Freedom Camping Act 2011 (the Act) to determine how the regime is working in practice. Some questions in the survey relate to identifying how many infringements were issued, paid and written off by council.

Challenges arising from freedom camping

- 4 The Act, introduced for the Rugby World Cup, allows local authorities to introduce bylaws to define and restrict freedom camping in regions or territorial areas. However, the Act restricts the ability of local authorities to regulate freedom camping on land owned by the Department of Conservation, the New Zealand Transport Agency, Land Information New Zealand, KiwiRail or private sector land, e.g. land owned by Meridian in Mackenzie district.
- 5 Freedom campers and tourists, particularly those in non-self-contained vehicles, are contributing to environmental hazard by toileting at roadsides.

- 6 A recent survey of Canterbury region tourism operators undertaken for the regulatory review for CREDS (Agenda item 4) highlighted that there are issues with freedom camping including lack of facilities for freedom campers.

What can Canterbury do about it?

- 7 The ability to provide new or maintain existing facilities to cater to tourists, including freedom camping, in some Canterbury councils is impacted by demographic and funding challenges. The Canterbury Mayoral Forum has written to the Minister of Tourism, Rt. Hon. John Key, to request central government leadership and assistance in managing tourism in Canterbury, including freedom camping (see copy of letter attached).
- 8 This paper proposes establishing a working group to develop a joined-up approach to address freedom camping issues in Canterbury, which could include:
 - developing a multi-agency response through partnership between local government and relevant central government agencies
 - quantifying costs for councils in maintaining infrastructure at freedom camping hot-spots, including compliance and enforcement costs, through data collection
 - identifying opportunities to educate and communicate with freedom campers by using existing online resources (www.camping.org.nz; www.rankers.co.nz) and social media platforms
 - examining existing freedom camping bylaws in Canterbury to determine whether there are opportunities to identify the most appropriate tools to address issues across different councils
 - working with the industry (New Zealand Motor Association and rental vehicle companies) to identify and develop best practice approaches which promote responsible freedom camping.

Canterbury Policy Forum

Item 9

Date: 18 March 2016

Presented by: Geoff Meadows

Canterbury councils joined-up response to the Resource Legislation Amendment Bill

Purpose

To present to the Local Government and Environment Select Committee a collaborated response to the Resource Legislation Amendment Bill.

Recommendations

That the Canterbury Policy Forum

- 1 **note** that several Canterbury councils have submitted independently on the bill
- 2 **note** that Waitaki, Mackenzie and Hurunui are relying on the joined-up Canterbury response as their submission on the bill
- 3 **note** the attached matrix of each council's position on the bill and the significant consensus on most points of submission
- 4 **note** the closing date for submissions to the Select Committee was 14 March 2016
- 5 **note** that an extension of time has been granted by the Select Committee and that in the interim a placeholder submission has been made by the Canterbury Mayoral Forum.

Background

- 1 The *Resource Legislation Amendment Bill* was introduced into the house on 26 November 2015 and proposes to principally amend the *Resource Management Act 1991* (RMA), with relatively minor amendments to the *Exclusive Economic and Continental Shelf (Environmental Effects) Act 2012*, the *Environmental Protection Authority Act 2011*, the *Conservation Act 1987*, the *Reserves Act 1977*, and the *Public Works Act 1981*. The Bill passed the first reading on 3 December 2015 and was referred to the Local Government and Environment Select Committee who will receive submissions until 14 March 2016.
- 2 Almost concurrently, Local Government New Zealand (LGNZ) released their "blue skies" discussion about New Zealand's resource management system, pointing out that the RMA has become the "whipping boy" for those who see it as an inefficient handbrake on growth on the one hand, and on the other hand for those who feel it has failed to protect the environment from harmful use and development. The LGNZ discussion document highlights that the RMA has been amended 21 times in the last 24 years, and discusses the merits of a fit-for-purpose resource management system (fundamental reform) rather than progressive amendment which makes the legislation more complicated and, over time, quite different from its original intent.
- 3 Members of the Canterbury Planning Managers Group (CPMG) met in Timaru on 27 January 2016 to discuss the content of a Canterbury-wide submission on the Bill, ahead of the formal meeting of the group on 19 February 2016. A sub-committee of the CPMG met to further develop the submission in Christchurch on 3 March 2016.

- 4 The Bill has some worthwhile reforms, particularly in relation to natural hazards by inserting into Section 6 the management of natural hazard risks as a matter of national importance, as well as amending Section 106 from “erosion, falling debris, subsidence, slippage, or inundation” to “significant risk from natural hazard”. Other worthwhile reforms in the Bill include scaling of process costs, on-line servicing of documents and introducing regulatory powers to remove stock from water bodies.
- 5 The Bill however is the latest in a long list of RMA amendments that make the Act complex, unwieldy and cumbersome. The Departmental Disclosure Statement accompanying the Bill includes Treasury’s Regulatory Impact Assessment which notes that much of the reform package relies on local authorities to implement. The draft submission from Canterbury Councils is based on the consensus achieved on each of the points of submission as depicted in the attached matrix.

Mayoral Forum combined Canterbury councils submission

- 6 The collaborative process has been complicated and it has not yet been possible to finalise the draft submission for circulation to the Mayoral Forum for their consideration and approval. Accordingly an application was made to the Local Government and Environment Select Committee for an extension of time. The Clerk of the Committee has agreed to an extension to Thursday 24 March 2016, the day before the Easter break. In the interim, the attached placeholder submission has been lodged with the Select Committee.

Attachments

- Matrix of Canterbury councils’ positions on points in the Bill
- Canterbury Mayoral Forum submission, 14 March 2016.

RLA Bill TLA Submissions Matrix

Consensus
No Consensus
Further comments needed from Tas

	Ashburton	Christchurch	Kaikoura	Hurunui, Mackenzie, Waimakariri & Waitaki (CPM)	Selwyn	Timaru	Waimate	Waimakariri	ECan	Comments from 3 March Workshop
National Planning Template	Supports/is not opposed to the NPT where it is limited in its scope and if its development is facilitated by technical advisory groups formed at least in part of local authority planning practitioners. An exception to the 1 year timeframe of the NPT where a proposed plan has already been notified subject to extension to cover plans that are recently operative. Oppose NPT's which are overly prescriptive & which do not allow for local conditions.		NPT provisions opposed. NPT should not be used to override local community planning. This is contrary to the Purpose & Principles of the RMA but also does not sit alongside the proposed collaborative planning process. The Act outlines local communities should make decisions but this will be impossible if national direction is set through NPS & NPT.	More information required. Proposed new section 58(1) requires local authorities to amend district plans within 2 years of royal assent to be consistent with NPT. Not efficient or equitable. Supports establishment of sector technical working group.	Support (overall intent to provide grater consistency in plan making) but oppose (where it duplicates existing national instruments via NPS & NES framework & where it applies to specific areas of NZ.	Support NPT providing common definitions e.g. how to measure height. Do not support any provisions beyond common definitions as we consider provisions specific to local areas are required. Local provisions need to reflect local conditions and the aspirations of the community.	If a council has completed its second generation plan review, then a deferment of the NPT should apply to allow those particular Councils more time to financially be able to implement the changes sought by the NPT.	Concerns NPT would reduce flexibility and adaptability in district plans and duplicate existing national instruments.	Supports in principle. Not enough information given. Recommend a collaborative process with local govt to develop the detail of NPT. Transitional provisions for NPT to only be required to be implemented at time of making a new plan.	Consensus - Do not support but support common definitions. Support a collaborative process provided its developed with local government
NES & NPS applying to specific area	Oppose	Does not oppose			Oppose			Oppose	Oppose Recommend deletion of this proposal.	Consenses - Oppose
Hearing Commisioners	Concerns over implications of needing hearing commissioners to cover iwi perspectives relating to the overall number of suitably qualified commissioners, & issues of costs for councils & applicants outside main urban areas. Concerns around the fixing of fees relating to resource consent matters and the potential for the ratepayer to incur unexpected costs.		Support intention but wording is problematic. KDC has a successful model in which where an independent hearing commissioner is required an additional commissioner with tikanga Maori & a qualified Community representative are appointed to site alongside the hearings commissioner. Fixing of charges is potentiall problemation as it makes it difficult for the council to cost recover if actual fees are higher than anticipated	Concerns over implications of needing hearings commissioners to cover Iwi perspectives. Availability; fixed fees; costs for councils and applicants.	Support but concerns with respect to the number of suitably qualified commissioners in that regard.			Oppose - concerns around number of suitable and qualified commissioners available.		Consensus - Support as appropriate
Collaborative Planning Process	Concerns - discussions within the group are discoverable under LGOIMA. Amend so that the 'record of final agreement' is subject to LGOIMA & not detailed discussion points. Concerns that use of the collaborative process would increase bureaucracy.	Support - depending on how it works in practice. Restrictions on appeal rights for participants a concern.		Support in principle - support depends on how this process will take place.	Support			Support - depending on how these processes work in practice.	Support - collab. Process to be undertaken with more than one local authority; collab planning groups to include both elected and appointed members of council.	Consensus - Support in Principle
Mandatory Iwi participation	Supports iwi participation agreements where the joining of an agreemtn is not mandatory.	Supports increased participation in PC & RC. Provisions for increased participation needs to be coupled with timeframes. Opposes the pointless duplication arising from a mandatory requirement for iwi participation agreements where existing agreements in place.		Neither support/oppose - concern doesn't take into account existing arrangements.	Support proviso of recognition of existing arrangements.		Supports the need for IPA or existing agreements, concerns for financial implications.	Oppose - without due regard to the quality and effectiveness of existing arrangements.	Supports - to require local authorities to consult tangata whenua, through relevant iwi authorities, on appointment of hearing commisioners.	Consensus - Support however if there are existing arrangements, don't need a mandatory requirement.
Matters of Importance (Natural Hazards)	Support	Support		Support - inserting management of natural hazards into section 6 and the amendment of s106.	Support - inserting management of natural hazards into section 6 and the amendment of s106.			Support	Support	Consensus - Support
s106 'significant risk from natural hazards'.	Support. Concern over consistent administration of what constitutes a 'significant' hazard, although this could be determined by a NPS.	Support		Support	Support					Consensus - Support
Streamlined Planning Process	Support/not opposed to streamlined planning process for Councils subject to clarification of how processes would function in practice and input from technical professionals with local authority experience.				Support				Support	

	Ashburton	Christchurch	Kaikoura	Hurunui, Mackenzie, Waimakariri & Waitaki (CPM)	Selwyn	Timaru	Waimate	Waimakariri	ECan	Comments from 3 March Workshop
Online servicing of documents	Support	Support		Support	Support			Support	Support - ammend schedule 1(5)(5) RMA to provide electronic accessibility of planning docs to public.	Consensus - Support
Power to remove stock from water bodies	Supported in relation to the prohibition of intensive farming however Councils has concerns in relation to regulateions which prohibit 'extensive' grazing where animals control weeds in riverbeds & where impact on water quality is minitimal.			Support	Support			Support	Support	Consensus - Support
Remove duplication of HSNO Act & RMA	This was not in ADC submission but ADC would support this.	Support	Support		Support				Support	Consensus - Support
Sufficient development capacity (residential & business land)	Amendment places local government planning into the province of the private sector & significantly alter the onus of responsibility and burden or risk for the provision of infrastructure. Concerns over inserting a definition of 'development capacity'.	Oppose - Definition of 'development capacity' may have unintended consequences.	Oppose this amendment as zoning land for additional development is deemed to be a TA function. Amendment should be changed to address the issues that are specific to regional council functions		Support			Oppose - places local govt into province of the private sector.concern around definition of 'development capacity'.	Support	Consensus - Support the concept. Don't define in the RMA, define in the NPS. Under the LGA there is a requirement for 30 year infrastructure growth. Why double up?
Directing Council to require land		Support - requirement for Council to buy land if a planning provision renders land incapable of reasonable use.		Support	Support			Support		Consensus - Support
Regulatory power to prohibit and remove planning provisions	Oppose. District Plan rules have gone through a rigorous public process. This regulatory power undermines the purpose and intent of RMA District Plans, weakens public confidence in the integrity of the plan and devalues the exhaustive & comprehensive public process to development rules in the first place.	Oppose		Oppose - reduces scope of consenting authorities powers.	Oppose					Consensus - Oppose
Fast Track applications	Oppose - new section 360F can add particular activities or classes of activities which could end up conflicting with District Plans & in the case of effects-based plans, nominating particular activities may lead to changes being required to district plans.	Oppose 10 working day limit for notification and substantial decisions on controlled activities & activities prescribed by regulations.			Oppose (council already has fast track consent process working well).	Do not support. Support status quo. Fast track consents already occur, but want the flexibility of not being required to do it due to limited resourcing. Enforcing the 2 year time limit on decisions on submission would raise resourcing issues and likely lead to rushed poor decisions.		Oppose - may conflict with District Plans.	Supports in principle.	Consensus - TA's do not support, Ecan supports in principle.
Changes to when rules in plan changes have immediate legal effect		Oppose - provision provides valuable environmental protection.								Comments from TA's required
Boundary activities (permitted activities if approved by neighbour)	Oppose in current form. In principle it could assist in reducing unnecessary resource consent costs. Concerns that it only requires approval of owner or occupier.	Oppose - Information required? Administration issues with breaches.		Oppose - doesn't allow for cumulative effects to be considered.	Oppose		Council considers that the scenario suggested in the CPM submission that 'sites with the affected boundary need to be in different ownerships' may not go far enough.	Oppose - does not remove process costs & introduces unnecessary complexity.	TA's are most affected by this. Happy with TA's consensus	Consensus - Oppose - Can lead to perverse outcomes. Have unintended consequences been considered?
Changes to notification for consent applications		Oppose		Oppose	Oppose	Oppose. Notification provisions for resource consents are right now. There are hardly any consents that get publically notified in the Timaru District now.		Oppose	Oppose	Consensus - Oppose
Striking out submissions	Oppose - mandatory striking out of submissions without an adequate definition of 'insufficient factual basis' and without a clear authorisation of who will determine this. Recommend the word 'must' be replaced with 'may' to allow discretion.	Oppose - will create inefficiencies and it is inequitable.		Oppose. The definition of, and the delegation of who will determine 'sufficient facutal basis' is not clear.	Oppose			Oppose. The definition of, and the delegation of who will determine 'sufficient facutal basis' is not clear.	Oppose	Consensus - Oppose

	Ashburton	Christchurch	Kaikoura	Hurunui, Mackenzie, Waimakariri & Waitaki (CPM)	Selwyn	Timaru	Waimate	Waimakariri	ECan	Comments from 3 March Workshop
Removal of financial contributions		Does not oppose the repeal of the financial contribution provisions.		Oppose - cost transferred to rate payers; resource consent applicant will become the beneficiary.	Oppose	Do not oppose.		Oppose	Supportive in principal but is concerned that the LGA does not allow for the adoption of a development contributions policy, or the ability to collect development contributions for infrastructure such as stop banks. Suggests a change is made to Part 6, Sub-part 5 to enable Regional Councils to develop a development contribution policy to fund upgrades to infrastructure managed and funded by the regional council.	No consensus
Subdivision as permitted activity	Oppose - Technical concerns over implementation	Oppose - sufficient rules in its district plan to adequately deal with categories for RC's and when a RC is required.			Oppose			Oppose.		Consensus - Oppose
Conditions of Resource Consents		Oppose		Oppose	Oppose			Oppose		Consensus - Oppose
Reduced Rights of Appeal	Oppose - Council has not found that the ability of the public to participate in the appeal process has significantly delayed or hindered economic development.	Opposes the removal of rights of appeal in relation to boundary activity consents, subdivision consents that are not non-complying or res activity on single allotments that are not non-complying.			Oppose	Oppose.		Support. Appeal conditions of consent	Support	No consensus
Collaborative planning process review panel proceedings to be subject to LGOIMA	Oppose								Oppose	Comments from TA's required
Limit notification of consent applications		Oppose						Oppose	Oppose	Consensus - Oppose
Restrict eligibility to be considered affected persons		Oppose						Oppose	Oppose	Consensus - Oppose
To establish regulations prescribing activities where public notification precluded		Oppose						Oppose	Oppose	Consensus- Oppose
Formation of Technical Advisory groups	Formation of technical Advisory Groups at least be formed of local authority technical officers, who can give practical feedback and advise on how best to achieve the aims of the Bill and potential implications for local authorities.						Could be suggested that the groups could even provide advice to the Minister when intending to exercise the regulatory making powers, as generally there is no public participation process involved when an Order-in-Council is made.			Comments from TA's required
Changes to section 104 (decision on resource consent applications)		Not opposed but is superfluous.	Changes to section 104 for environmental offset is premature & not well thought out. Provision does not fully explore the concept of environmental offsetting not oes it consider when effects are so detrimental to the environment that offsetting is inappropriate.						Oppose	Comments from TA's required
Changes to section 108			Change to status of all activities to restricted discretionary and will make it difficult for conditions to be imposed on resource consent.							Comments from TA's required
Further limits on Environment Court involvement	Oppose compulsory participation in Alternative Dispute Resolution					Environment Court involvement has been useful. The new mandatory ADR will likely constrain negotiations due to the loss of confidentiality. There are some matters that Council do not want to negotiate on.				No Consensus
Scaling of Process Costs		Support								No Consensus
Requirement for compensation for purchase of land with dwellings under the Public Works Act		Support								Further comments from TA's required
Attempt to remove duplication between Reserves Act and the RMA resource consent process		Support								Further comments from TA's required
Proposal to determine contents of NPSs								Support in principle	Concerns	No consensus

	Ashburton	Christchurch	Kaikoura	Hurunui, Mackenzie, Waimakariri & Waitaki (CPM)	Selwyn	Timaru	Waimate	Waimakariri	ECan	Comments from 3 March Workshop
Regulations on the use of models for monitoring & data gathering	Oppose the controls, methodologies and reporting of monitoring and the implications for resourcing, as rationale for these requirements appears limited.								Support in principle. Concerns around consistent in monitoring, lack of detail and what it means	Consensus - Support in principle. Concerns around monitoring.
Provision to allow Regional Councils to remove structures from coastal marine area									Support	Consensus Support

SUBMISSION TO THE LOCAL GOVERNMENT AND ENVIRONMENT SELECT COMMITTEE

CANTERBURY Mayoral Forum

*A strong regional economy with resilient, connected
communities and a better quality of life, for all.*

RESOURCE LEGISLATION AMENDMENT BILL

14 March 2016

1. The Canterbury Mayoral Forum comprises the Mayors of the ten territorial local authorities in Canterbury and the Chair of Environment Canterbury, supported by our Chief Executives. The purpose of the Forum is to promote collaboration across the region and to increase the effectiveness of local government in meeting the needs of Canterbury's communities.
2. All Canterbury councils actively participate in the Forum: Kaikōura District Council, Hurunui District Council, Waimakariri District Council, Christchurch City Council, Selwyn District Council, Ashburton District Council, Mackenzie District Council, Timaru District Council, Waimate District Council, Waitaki District Council and Environment Canterbury.
3. The Mayoral Forum work programme is implemented by the Canterbury Chief Executives Forum and the Canterbury Policy Forum. For matters that impinge on planning, the Policy Forum is supported by the Canterbury Planning Managers Group.
4. The Canterbury Mayoral Forum welcomes the opportunity to make a submission on the Resource Legislation Amendment Bill (the Bill) and the proposed changes to the Resource Management Act 1991 (the RMA).
5. The Canterbury Mayoral Forum wishes to be heard in support of our submission.
6. The submission from the Canterbury Mayoral Forum has been developed with input from the Planning Managers Group via a series of meetings through January to March 2016, as the respective councils have developed their own responses to the Bill. It provides comment on those matters in the Bill on which all our region's councils are in consensus.
7. The process for gathering and coordinating the views of our member councils on this large and wide-ranging Bill is complex. It will take us some time yet to finalise the submission and

Mayors standing together for Canterbury.

Ashburton District Council • Canterbury Regional Council • Christchurch City Council • Hurunui District Council
Kaikoura District Council • Mackenzie District Council • Selwyn District Council • Timaru District Council
Waimakariri District Council • Waimate District Council • Waitaki District Council

Mayoral Forum Secretariat, C/- Environment Canterbury, PO Box 345, Christchurch 8140 T: 03 345 9323

secure our members' approval. In the interim, we are providing the following as a placeholder submission, to give an indication of the main points that will be developed more substantively in the full submission. We will provide the full submission to your Committee by 5 pm on Thursday 24 March 2016.

8. There are a number of proposal included in the Bill which the Canterbury Mayoral Forum submission supports. These include the addition of the management of natural hazard risks as a matter of national importance in Part 2 RMA, online servicing of documents, and regulation power to exclude stock from water bodies.
9. There are a number of proposals where the Canterbury Mayoral Forum recognises and supports the principles and aims behind the proposed reforms, but has concerns as to how these proposals will work in practice. Matters that we support in principle include the scaling of process costs, the collaborative and streamlined planning processes, and the introduction of Iwi Participation Agreements.
10. For a number of other matters, the Canterbury Mayoral Forum recommends changes to the proposals as they are currently framed in the Bill. These include the proposed National Planning Template, provisions for hearings commissioners, the definition of 'development capacity', regulatory power to prohibit and remove planning provisions, regulations relating to fast track applications, boundary activities, public notification of consent applications, conditions of resource consents, striking out submissions, and removal of financial contributions.
11. For further enquiries, please contact the Secretariat for the Canterbury Policy Forum:

Dr Ronnie Cooper, Environment Canterbury – 027-839-2565,
or ronnie.cooper@ecan.govt.nz

Mayors standing together for Canterbury.

Ashburton District Council • Canterbury Regional Council • Christchurch City Council • Hurunui District Council
Kaikoura District Council • Mackenzie District Council • Selywn District Council • Timaru District Council
Waimakariri District Council • Waimate District Council • Waitaki District Council

Mayoral Forum Secretariat, C/- Environment Canterbury, PO Box 345, Christchurch 8140 T: 03 345 9323

Canterbury Policy Forum

Item 10

Date: 18 March 2016

Presented by: Ronnie Cooper

Government initiatives – Canterbury engagement and responses

Purpose

This paper is to update the Forum on shared Canterbury-wide responses to central government initiatives.

Recommendations

That the Canterbury Policy Forum:

- 1 **note** the Ministry for the Environment's revised timeline for consultation on National Direction Projects (NPSs and NESs)
- 2 **note** work under way to maximise opportunities to engage with central government agencies on proposed new policy and legislation.

Background

- 1 At its meeting on 25 September 2015 the Forum agreed to work in collaboration and with the Canterbury Planning Managers Group (CPMG) to develop shared responses to each of the Government's policy initiatives for new and revised national policy instruments under the RMA. At its 29 January 2016 meeting the Forum discussed the Government's programme of proposed new and amended NPSs and NESs with our visitors from the Ministry for the Environment led by Katherine Wilson.

Revised timeline

- 2 At the meeting of the regional councils' Resource Managers Group on 4 March 2016, the Ministry provided a revised timeline for consultation on the proposed and amended NPSs and NESs (attached).

Next steps for fresh water

- 3 On 20 February 2016 the Minister for the Environment Nick Smith released a package of proposed reforms to New Zealand's systems for freshwater management (www.mfe.govt.nz/consultation/next-steps-fresh-water). The proposed changes include:
 - amending the National Policy Statement on Freshwater Management (NPS-FM) to include:

- regulations around the exclusion of stock from water bodies – this overlaps with proposals in the Resource Legislation Amendment Bill
 - applying the requirement to ‘maintain or improve water quality’ to every freshwater management unit¹ rather than to a region as a whole
 - using the Macroinvertebrate Community Index as a mandatory monitoring method
 - exceptions to national bottom lines for catchments with significant infrastructure
 - extending the application of national bottom lines and thresholds for lakes to intermittently closing and opening lakes and lagoons (ICOLLs) – in Canterbury region these are Te Waihora/Lake Ellesmere, Waiwera/Lake Forsyth, and Wainono Lagoon
- economic use of freshwater – requiring more efficient use and good management practice via the introduction of national technical efficiency standards and good management practice standards
 - requiring councils to reflect Te Mana o Te Wai in their implementation of all relevant policies in the NPS-FM, and to engage with iwi and hapū at the outset of freshwater planning processes
 - establishing a \$100 million Freshwater Improvement Fund..
- 4 Submissions are due by 22 April 2016. A meeting is being held on 22 March 2016 to bring together relevant staff from Canterbury councils to develop a shared response to this package of proposals. Input from the CWMS Committees is being coordinated via Environment Canterbury. Given the tight timeline we will need to work via email to circulate drafts and finalise the shared submission.

National Environmental Standard for Plantation Forestry

- 5 In August 2015 Canterbury councils made submissions on the Government’s proposed new national directions for forestry (NES-PF). A large number of submissions were received by the Ministry of Primary Industries on the proposed NES-PF. Since then the Ministry of Primary Industries has been working through the submissions to ensure that the eventual NES-PF will be effective and workable.
- 6 In February 2016 a group of MPI staff met with Environment Canterbury staff to discuss the points raised in the Environment Canterbury submission and MPI’s progress on addressing those points. MPI indicated they are keen to work closely with local authorities as they finalise the NES-PF. There are implications for councils’ planning and consenting processes. An invitation is being extended to MPI to attend the next meeting of the CPMG (15 April 2016) as the most appropriate level of our region’s collaborative council networks to discuss the detail and implications of the forthcoming changes.

¹ Freshwater management units (FMUs) are catchment-based areas for which community values will be identified for freshwater objectives and limit-setting.

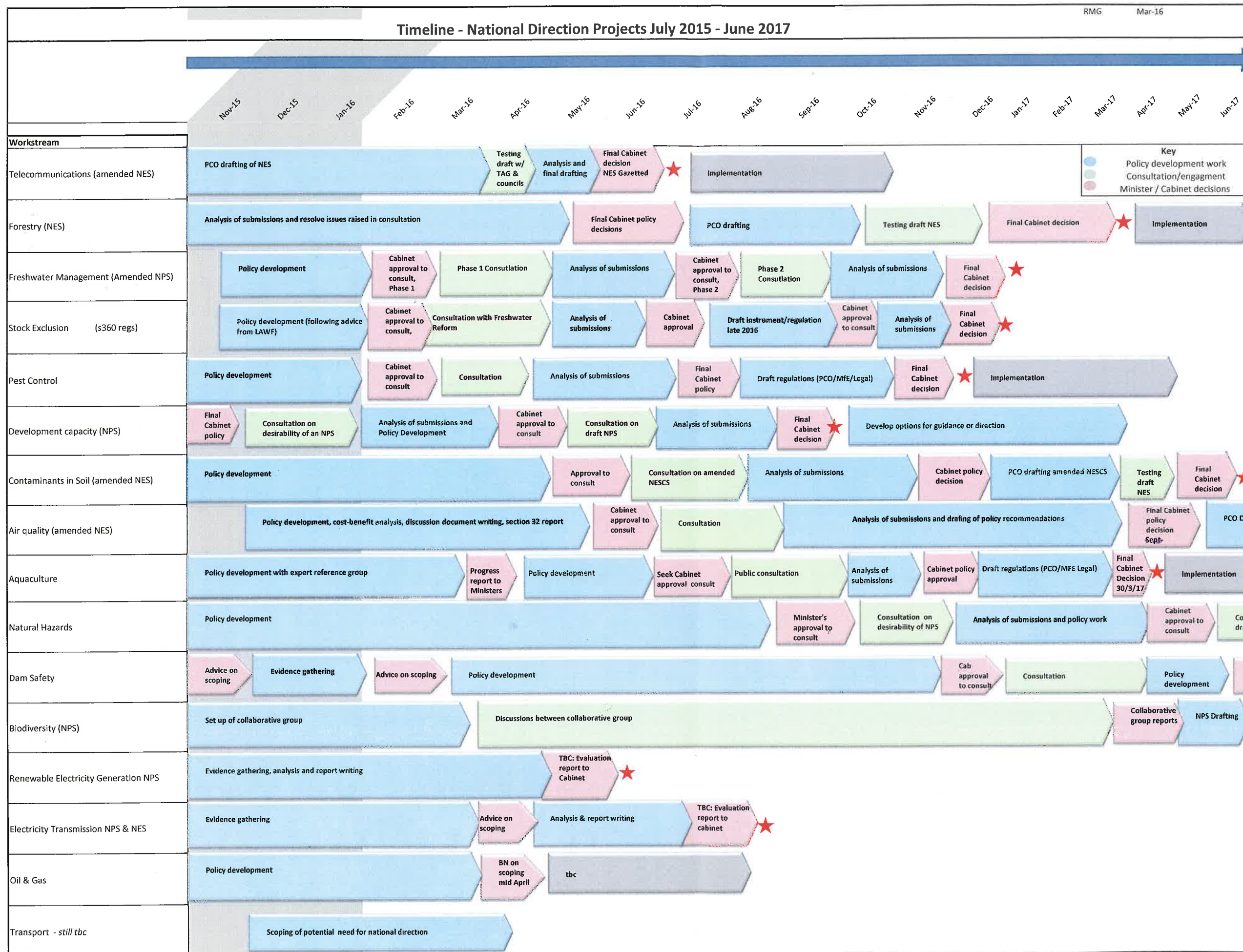
Resource Legislation Amendment Bill

- 7 Agenda paper 8 reports on the process by which the CPMG has been developing a combined region-wide submission for the Mayoral Forum on the Resource Legislation Amendment Bill.
- 8 The Ministry for the Environment is organising a series of workshops in April and June 2016 with local government, iwi and hapū, and other RMA practitioners to begin preparing for implementation of the Bill should it proceed to enactment. The aim of the workshops is to scope and develop guidance material to support implementation of some of the more technical and complex changes proposed in the Bill.
- 9 Contributing to these workshops is a significant opportunity to ensure our needs and concerns are given consideration. The Secretariat (Ronnie Cooper) will facilitate involvement of relevant staff. An additional option would be to invite MFE's implementation guidance team to a meeting here in Canterbury.

Attachment

MFE timeline: National direction projects July 2015–June 2017.

As at 4 March 2016.



Canterbury Policy Forum

Item 11

Date: 18 March 2016

Presented by: Chair

Canterbury Mayoral Forum and Chief Executives Forum updates

Purpose

This paper is to update the Canterbury Policy Forum on the work of the Mayoral Forum and Chief Executives Forum.

Recommendations

That the Canterbury Policy Forum:

- 1 **note** the work programmes of the Mayoral Forum and Chief Executives Forum
- 2 **discuss** opportunities for the Canterbury Policy Forum to contribute to and support these programmes.

Mayoral Forum

- 1 At its meeting on 26 February 2016 the Canterbury Mayoral Forum met with Jin Zhijian, Consul-General, and Liu Lian, Consul, People's Republic of China. Consul-General spoke on tourism and investment, noting that:
 - New Zealand is now in the top 10 travel destinations for people from China, and with unrest in other parts of the world, New Zealand will become more popular
 - there is great potential for tourism but matters to be addressed include a lack of suitable hotel accommodation, promotion of attractions in Canterbury, signage and training local people in service industries in Chinese language
 - last year China invested \$US1.9 billion in New Zealand
 - Chinese investors are interested in the rebuild of Christchurch, irrigation and hotel development.
- 2 Other matters discussed at the Mayoral Forum meeting were:
 - approval of the Canterbury Digital Strategy
 - local government collaboration in Canterbury
 - the CREDS (refer Agenda item 4)
 - the CWMS Quarterly Report.
- 3 The three-year work programme of the Canterbury Mayoral Forum is attached.

Chief Executives Forum

4 At its meeting on 15 February 2016, the Canterbury Chief Executives Forum considered:

- asset management systems:
 - a report from Waugh consultants is to be referred to the newly formed Canterbury Engineering Managers Group to develop recommendations for initiatives
 - support for having consistent systems among the region's councils and potential for a centralised database and opportunities to share information and knowledge
 - Office of the Auditor-General work with infrastructure strategies – OAG is planning to look at how local authorities understand assets, value of investment, and future expectations – an OAG representative will attend the CEF meeting on 4 April 2016
- review of the Canterbury region combined infrastructure strategies, levels of investment and alignment of these with strategies – this will also be referred to the Engineering Managers Group
- local government organisation in Canterbury – the Minister and Local Government Commission are visiting the region in April – a Chief Executives Working Group is proposed to identify achievements and opportunities in collaboration
- the proposal to develop 'the case for Canterbury' (see CREDS update Agenda item 4)
- developments and direction, Christchurch City and Regenerate
- investigation of collective approaches to rating and valuation services
- public transport governance and delivery arrangements
- health and safety – research is to be undertaken on collaborative best practice for reporting on health and safety issues.

Attachment

Canterbury Mayoral Forum: Work Programme 2013-16.

CANTERBURY MAYORAL FORUM WORK PROGRAMME, 2013-16

NATIONAL/CENTRAL GOVERNMENT PRIORITIES – AND KEY PRIORITIES FOR THE CANTERBURY MAYORAL FORUM

Objective: align with and influence central government and sector priorities, initiatives, policy and regulation – ensure a strong local government ‘voice’ on issues affecting Canterbury, and collaborate to address issues and opportunities for the region as a whole.

WHAT	BY WHEN	TASKS	WHO	VIA	STATUS
1. CERA Transition	May 2015	<ul style="list-style-type: none"> brief report on progress and anticipated timeframes for legislation/implementation 	CMF	CEAG	<ul style="list-style-type: none"> Government released a draft plan, <i>Greater Christchurch Earthquake Recovery: Transition to Regeneration</i>; submissions closed 30 July 2015 Greater Christchurch Regeneration Bill introduced 19 Oct 2015; First Reading 22 Oct 2015; referred to Local Government & Environment Select Committee for submissions by 4 Dec 2015 and report to the House by 25 Feb 2016 COMPLETED
2. ECan governance and representation reviews	May 2015	<ul style="list-style-type: none"> information sharing and input, including an update on representation reviews across the region 	CMF	CEF	<ul style="list-style-type: none"> discussion with Hons Smith and Upston 27 Feb 2015 all councils and Mayoral Forum made submissions Government decisions announced 8 July 2015 Environment Canterbury (Transitional Governance Arrangements) Bill introduced 26 Aug 2015; First Reading 13 October; referred to Local Government & Environment Select Committee for submissions by 19 Nov 2015 and report to the House by 15 Feb 2016 submission on behalf of 9 of 11 members lodged 19 Nov 2015; presented to Select Committee 25 Nov 2015 COMPLETED
3. Earthquake rebuild, greater Christchurch	Ongoing	<ul style="list-style-type: none"> keep CMF informed and able to maintain an overview of implications for the wider region, including as the rebuild peaks and decelerates maximise opportunities while this continues to be a priority for central government 	UDS partners	CEAG/CCC	<ul style="list-style-type: none"> picked up in CREDS (items 7-13) and UDS refresh CCC presented to CEF Feb 2016 on CERA transition, Regenerate Christchurch and direction and developments at CCC
4. Maximising the growth of Canterbury's economy	May 2015	<ul style="list-style-type: none"> develop Canterbury Regional Economic Development Strategy (CREDS) 	CMF	CEF	<ul style="list-style-type: none"> strategy and work programmes developed and launched 28 Aug 2015 – SEE BELOW, ITEMS 7-13
5. RMA reform a. Making land available for housing	Dec 2015	<ul style="list-style-type: none"> 5a includes Rules Reduction Task Force and Productivity Commission review of provision of land for housing joint analysis and submission – distinguish Canterbury from Auckland issues and include a non-metro perspective, especially on freshwater management conduct joint analysis and prepare draft submissions for consideration by the CEF and CMF identify opportunities to integrate RPs/DPs 	CMF	CPF/CCC	<ul style="list-style-type: none"> awaiting draft legislation Rules Reduction Taskforce discussed by CEF 11 May 2015 analysis led by WDC informed and strengthened Canterbury submissions on Productivity Commission draft report on <i>Using land for housing</i>

WHAT	BY WHEN	TASKS	WHO	VIA	STATUS
b. Principles/purpose (ss.6-7), integrated regional and local plans, freshwater collaborative planning		<ul style="list-style-type: none"> share policy resource and support for plan development 		CPF/ECan	<ul style="list-style-type: none"> awaiting draft legislation
6. Infrastructure (roads, water, broadband)	Aug 2015	a) develop an overview of the region's 30-year infrastructure strategies (and how these relate to Service Delivery Reviews) legislated in the 2014 amendments to the Local Government Act 2002 and report to CEF	CEF	CPF/SDC & WDC	<ul style="list-style-type: none"> CPF commissioned Jan 2015, endorsed by CEF Feb 2015 CPF will review infrastructure strategies post-adoption of 2015 LTPs - scope of analysis agreed by CEF 3 Aug 2015 reported to CEF 15 Feb 2016 and referred to engineering managers for consideration and recommendation (in consultation with finance managers) to CEF 4 Apr 2016
	Aug 2015	b) monitor emergence of a National Infrastructure Plan expected from central government mid-2015, identify regional priorities as a basis for submission / advocacy to central government and report to CMF 29 May 2015	CMF	CPF/TDC	<ul style="list-style-type: none"> CPF representation at MBIE workshop 1 May 2015 Plan (National Infrastructure Unit, Treasury) released 21 Aug 2015 NIU involved in transport workshop 2 Dec 2015

CANTERBURY REGIONAL ECONOMIC DEVELOPMENT STRATEGY

***Vision:** A region making the most of its natural advantages to build a strong, innovative economy with resilient, connected communities and a better quality of life for all.*

***Objective:** Maximise the economic growth of Canterbury and position this for when the earthquake rebuild peaks, by ensuring the region makes co-ordinated, optimal investment and development decisions that position it for long-term, sustainable growth.*

WHAT	BY WHEN	TASK	WHO	VIA	STATUS
7. Integrated regional transport planning and investment (Mayor Winton Dalley and HDC, supported by ECan)	Dec 2015	<ul style="list-style-type: none"> complete the review of public transport governance and delivery arrangements in greater Christchurch initiated with the Minister of Transport in February 2015 	WDC, CCC, SDC, ECan	CEs working group	<ul style="list-style-type: none"> draft report to CMF 28 Aug 2015 progress report to CEF 9 Nov 2015 final report to CMF 4 Dec 2015 COMPLETED
		<ul style="list-style-type: none"> ECan to ensure public transport needs and interests in Timaru District and wider region are addressed 	ECan		<ul style="list-style-type: none"> progress report to CEF 9 Nov 2015 reported to CMF 4 Dec 2015 COMPLETED
	May 2015	<ul style="list-style-type: none"> Review the scope, focus and membership of RTC and develop a joint work programme between CPF and TOG to align strategy and planning, build capability and review and develop the evidence base to implement the Mayoral Forum's strategy 	ECan		<ul style="list-style-type: none"> agreed May 2015 – ongoing reviewed CEF 9 Nov 2015 – ECan to progress
	Aug 2015	<ul style="list-style-type: none"> Convene a regional transport forum to identify barriers and opportunities for integrated, multi-modal transport planning and investment 	Winton Dalley		<ul style="list-style-type: none"> forum convened 12 August workshop 2 Dec 2015
	Dec 2015	<ul style="list-style-type: none"> Work with NZTA, SB Logistics and CEs of Kiwirail, airports and ports to scope data sharing and analysis to inform decision making 	CMF	HDC, ECan	<ul style="list-style-type: none"> workshop held 2 Dec 2015 workshop held 29 Jan 2016
	Dec 2015	<ul style="list-style-type: none"> Strengthen connections with other South Island Regional Transport Committees 	CMF	ECan / RTC	<ul style="list-style-type: none"> Environment Southland participating in workshop on 2 Dec 2015 meetings/teleconference calls scheduled for early 2016 with all South Island RTCs
	Jul 2016	<ul style="list-style-type: none"> Engage early with MoT on refresh of Canterbury RLTP, to encourage a more multi-modal approach to land transport in the new GPS likely to be released in 2017 	CMF	HDC, ECan	<ul style="list-style-type: none"> Initial conversations with MoT have occurred; will be followed up after workshop on 2 Dec 2015

WHAT	BY WHEN	TASK	WHO	VIA	STATUS
8. Digital connectivity (Mayor Damon Odey and TDC, supported by Commissioner David Bedford, ECan)	Ongoing	<ul style="list-style-type: none"> Liaison with and advocacy to central government for connectivity solutions for the Canterbury region 	CMF		<ul style="list-style-type: none"> correspondence with Ministers Dec 2014, Jul 2015 meeting with Minister of Communications Jun 2015 conversations with Minister for Economic Development and Crown Fibre Holdings Feb 2016
	Jun 2015	<ul style="list-style-type: none"> GIS map areas that currently lack mobile and broadband coverage and overlay with current and future irrigated land to identify where digital connectivity may be a barrier to development 	ECan	Canterbury Maps	<ul style="list-style-type: none"> done – and used as basis for advocacy with MBIE and Ministers to be repeated as at 30 June 2016
	Jun 2015	<ul style="list-style-type: none"> Meet with Spark NZ and key stakeholders to assess opportunities for an accelerated roll-out of 4G mobile broadband across Canterbury – and provide data and information to support Spark's decision-making on this 	Damon Odey	Supported by ECan	<ul style="list-style-type: none"> done – announced 10 Dec 2015
	Jul 2015	<ul style="list-style-type: none"> Support and co-ordinate Registrations of Interest to MBIE for Ultra-fast Broadband II, Rural Broadband Initiative II and Mobile Black Spot Fund 	TDC	With EDAs and Alpine Energy	<ul style="list-style-type: none"> done Alpine Energy has analysed ROIs to inform further work (Sep 2015)
	Mar 2016	<ul style="list-style-type: none"> Review consents barriers and consistency of approach across the region's TLAs (telecommunications easements and subdivision consents, Corridor Access Requests, single point of contact in councils to facilitate dealings with all partners for telecommunications consents) 	CEF	PMG	<ul style="list-style-type: none"> commissioned Sep 2015 reported to CEF (telecommunications and value-added production) Feb 2016
	Feb 2016	<ul style="list-style-type: none"> Build a business case to Crown Fibre Holdings (with Enable, Chorus, lines companies, EDAs, irrigation schemes and other major infrastructure providers) to fund a whole-of-region solution that provides back-haul and connects UFB and the RBI, fibre and wireless, to create a fully connected Canterbury 	CMF	CCG	<ul style="list-style-type: none"> commissioned in workshop with Connected Canterbury Group 18 Nov 2015 in discussion with Crown Fibre Holdings Feb 2016
9. Freshwater management and irrigation infrastructure (CWMS – Commissioner David Caygill and ECan) – reported quarterly to the CMF	Ongoing	<ul style="list-style-type: none"> CWMS infrastructure work programme – an integrated approach to water supply and distribution infrastructure 	CWMS RC		<ul style="list-style-type: none"> model to assess infrastructure options in South Canterbury is complete Government is reassessing how the Irrigation Acceleration Fund works (funding has been confirmed and increased) Irrigation NZ has received \$5 million from Primary Growth Partnership for SMART irrigation – an opportunity to link the CREDS water infrastructure, digital connectivity and value-added production work programmes infrastructure project updates reported to CMF 26 Feb 2016
	Ongoing to 2022	<ul style="list-style-type: none"> Zone Committees lead a collaborative community process to establish environmental limits, which ECan then implements through the Land and Water Regional Plan 	CWMS ZCs	with ECan	<ul style="list-style-type: none"> Hinds decision due in Dec 2015; South Coastal Canterbury hearings underway; Waitaki catchment notification delayed until Feb 2016; science preparation underway for Waimakariri and Orari to Pareora LWRP operative; plan change 5 notified 13 Feb 2016; update provided to CMF 26 Feb 2016
	Ongoing	<ul style="list-style-type: none"> Regional storm water forum identifies cost-effective storm water systems and ensures consistent storm water management planning and consenting with improved environmental performance 	CEF	RSWF	<ul style="list-style-type: none"> draft assessment of stormwater treatment construction costs prepared final draft gap analysis of best practice guidance prepared

WHAT	BY WHEN	TASK	WHO	VIA	STATUS
					<ul style="list-style-type: none"> draft consent ownership framework, with clarification of stormwater roles and responsibilities, prepared
	Ongoing	<ul style="list-style-type: none"> Whakaora Te Waihora, Wainono Lagoon and other restoration programmes 	ECan		<ul style="list-style-type: none"> ongoing – awaiting decisions on Government funding – i.e., how its environmental enhancement fund (\$100 million) will be spent ZIP delivery update reported to CMF 26 Feb 2016
10. Value-added production (Mayor Craig Rowley and WmDC)	Dec 2015 and ongoing	<ul style="list-style-type: none"> Identify key sector leaders and establish an advocacy group of up to 20 members ('movers and shakers' from developing and established businesses and leaders in research and development) with vision and passion to grow Canterbury's economy) – and consult and communicate with them regularly on an ongoing basis to: <ul style="list-style-type: none"> identify barriers to value-added production and propose possible solutions establish networking opportunities and open lines of communication and advocacy with local and central government achieve agreed, action-based targets share information across the region about innovation and new developments in value-added production work closely with ECan re. the CWMS and associated zone committees 	WmDC		<ul style="list-style-type: none"> meetings held 24 Nov and 3 Dec 2015 with CREDS reference group members, to agree selection criteria for an advocacy group
	Mar 2016 and ongoing	<ul style="list-style-type: none"> Share information across the region on how these innovations and developments are impacted and progressed by current local/central government policy/regulation/planning/consenting processes – each council to assign responsibility to an officer to maintain a watching brief on value-added production, for report six-monthly to the Policy Forum 	All councils	CPF	<ul style="list-style-type: none">
	Jun 2016	<ul style="list-style-type: none"> Identify opportunities in District Plan reviews to align planning, rules and regulation in ways that enable sustainable, value-added production 	CEF	PMG	<ul style="list-style-type: none"> commissioned Sep 2015 reported to CEF Feb 2016
11. Education and training for a skilled workforce (Mayor David Ayers and WDC)	May 2015	<ul style="list-style-type: none"> Establish a steering group to oversee strategy development and implementation 	WDC		<ul style="list-style-type: none"> done – and is meeting regularly
	Nov 2015	<ul style="list-style-type: none"> Develop a work plan for each agreed work stream, with terms of reference 	WDC	Steering group	<ul style="list-style-type: none"> substantially complete
	Ongoing	<ul style="list-style-type: none"> Secure commitment and funding for each work stream and commence implementation of action-focused plans. 	WDC	Steering group	<ul style="list-style-type: none"> in progress for transition planning – too soon for other programmes
	Dec 2015	<ul style="list-style-type: none"> Liaise with Mayor McKay and ADC on a joint approach to Government to remove barriers to migrant families to access affordable education and training 	David Ayers		<ul style="list-style-type: none"> working with Newcomer and migrant settlement work programme
	Dec 2015	<ul style="list-style-type: none"> In conjunction with other work programmes, articulate a vision for Canterbury and what the region offers to prospective students, workers, investors and visitors 	WDC	with CMF, CDC, C&CT, TEIs	<ul style="list-style-type: none"> 2 workshops (4 Nov, 27 Nov 2015) with CDC, CCT, CIAL, C4C, TEIs draft RFP prepared for a usage, attitude and image survey
	Dec 2015	<ul style="list-style-type: none"> Develop an integrated marketing plan to attract domestic and international students to Canterbury 	Tertiary Institution Accord members		<ul style="list-style-type: none"> Tertiary Accord developing plan to increase international tertiary student numbers from 10,000 to 26,500
	Dec 2015	<ul style="list-style-type: none"> Establish a forum to develop new and modified collaborative courses in agricultural engineering and water management 	Lincoln University		<ul style="list-style-type: none"> discussions commencing among key partners (Lincoln, Canterbury, CPIT, Lincoln Hub)
	Dec 2015	<ul style="list-style-type: none"> Investigate developing a programme to ensure every school leaver in Canterbury has a plan to transition to further education, training or employment and that progress is monitored post-school 	Steering group	with MoE	<ul style="list-style-type: none"> costing of transition plan for secondary students underway to determine funding options
12. Newcomer and migrant settlement support (Mayor Angus McKay and ADC)	Ongoing	<ul style="list-style-type: none"> Identify and advocate for the needs of newcomers and migrants 	CMF		<ul style="list-style-type: none"> CMF wrote to Ministers Dec 2014 CMF wrote to Minister of Health Oct 2015 investigation of tertiary education issues is underway

WHAT	BY WHEN	TASK	WHO	VIA	STATUS
	Jun 2016	<ul style="list-style-type: none"> Share resources and strategies to improve efficiency and reach; e.g. shared SOLGM ListServ or online cloud portal 	ADC with TAs and other key stakeholders		<ul style="list-style-type: none"> regional workshop 20 Aug 2015 – SDC shared draft strategy ADC in discussion with CCC on this Feb 2016
	2020	<ul style="list-style-type: none"> Canterbury TAs adopt a collaborative, cross-sectoral approach to deliver on CMF objectives for newcomer and migrant settlement – funding for this is secured in 2018-28 Long-Term Plans 	TAs with ethnic community representatives, NGOs and central government		<ul style="list-style-type: none"> ongoing – advisory group is being formed December 2015
	2020	<ul style="list-style-type: none"> Canterbury TAs make information about local services accessible to newcomers and migrants in our region – funding for this is secured in 2018-28 Long-Term Plans 	TAs with central government, NGOs and private sector		<ul style="list-style-type: none"> ADC shared info brochure at regional workshop 20 Aug 2015 SDC has a guide for new residents
	2020	<ul style="list-style-type: none"> Canterbury TAs monitor and evaluate progress 	CPF/CDC, and TAs with ethnic community representatives, NGOs and central government		<ul style="list-style-type: none">
13. Regional visitor strategy (Mayor Winston Gray and KDC, supported by CCC)	Aug 2015	<ul style="list-style-type: none"> Facilitate a regional forum to propose the establishment of a Canterbury regional tourism alliance and development of a regional visitor strategy 	Winston Gray		<ul style="list-style-type: none"> Done – 27 Aug 2015 – and agreed that Mayor Winston will convene this network periodically Draft Visitor Strategy prepared for consultation and consideration by CMF on 26 Feb 2016
	Dec 2015	<ul style="list-style-type: none"> Prepare a brief paper for Canterbury councils on the economic benefits of tourism to the region 	KDC	C&CT	<ul style="list-style-type: none"> presentation to CMF 4 Dec 2015 information incorporated in Canterbury Visitor Strategy 2016 COMPLETED
	Jun 2016	<ul style="list-style-type: none"> TAs to ensure that local government regulation is consistently tourism-business friendly across the region 	CEF	PMG	<ul style="list-style-type: none"> commissioned Sep 2015 for report to CEF 4 Apr 2016
	Jun 2016	<ul style="list-style-type: none"> TAs to share information and opportunities to provide: <ul style="list-style-type: none"> free wifi in the main streets of all Canterbury towns solar-powered charging tables (link to digital connectivity work programme) 	KDC/ CEF		<ul style="list-style-type: none"> under investigation

MULTIPLE COUNCIL ISSUES

Objective: work together to address issues that affect some, but not necessarily all, councils.

WHAT	WHEN	TASK	WHO	VIA	STATUS
14. Drinking water	Ongoing	<ul style="list-style-type: none"> stocktake of status of compliance with DWS clarify MoH guidelines: affordability cf. 'all practicable steps' advocacy re. timeframes and criteria in DWS engage in strategic partnership/s with DHBs and CPH identify affordable solutions, implement and share experience 	CEF	CPF	<ul style="list-style-type: none"> affordability is an ongoing issue further analysis/action via item 6 LGNZ Conference July 2015 supported a remit to reinstate central government water and wastewater subsidy schemes
15. Rural fire district	Jun 2015	<ul style="list-style-type: none"> proposal for business case for enlarged rural fire district for SDC, CCC, WDC, HDC. Councils are broadly in agreement but await DoC response and commitment 	CEF	CPF/SDC	<ul style="list-style-type: none"> this work is progressing Feb 2016: a proposal to create an enlarged rural fire district for four Councils placed on hold pending NZFS intention to combine urban and rural fires services
16. Natural hazard risk management	May 2015	<ul style="list-style-type: none"> develop a regional approach to natural hazard risk management with the TLA Planners/Emergency Management Officers Forum and report back to CPF by 31 Mar 2015 monitor natural hazards management reform (including climate change impacts, mitigation and adaptation) and possible emergence of an NPS – share information and lead drafting of any 	CMF	CPF/ECan	<ul style="list-style-type: none"> CPF commissioned Jan 2015 endorsed by CEF/CMF Feb 2015 reported to CEF Nov 2015, Feb 2016 all TAs have agreed to work together to

WHAT	WHEN	TASK	WHO	VIA	STATUS
		submissions required			progress this <ul style="list-style-type: none"> • CEF will receive update report Apr 2016

COLLABORATING TO GET BETTER RESULTS

Objective: work together to build capability, achieve efficiencies and deliver effective local services.

WHAT	WHEN	TASK	WHO	VIA	STATUS
17. Collaboration training	Oct 2014 May 2015	<ul style="list-style-type: none"> • 3 seminars/workshops held in 2014 • workshop for 3rd-tier managers Apr 2015 	CEF	CPF	<ul style="list-style-type: none"> • workshop run 10 Apr 2015 • secretariat to survey member councils on training needs early in 2016 – in progress
18. Service delivery reviews	May 2015	<ul style="list-style-type: none"> • convene a workshop to develop a common framework to support the conduct of service delivery reviews by each council • report back to CPF (31 Mar) and CEF (11 May) 2015 	CEF	CPF/SDC	<ul style="list-style-type: none"> • CPF initiated Jan 2015 • CEF endorsed Feb 2015 • 2 workshops held 2015 • work concluded
19. Review decision not to establish a Local Authority Shared Service Agency at this time	Dec 2015	<ul style="list-style-type: none"> • review December 2014 decision in light of further progress with current mechanisms for collaboration and Service Delivery Reviews conducted under 2014 amendments to the Local Government Act 2002 	CEF	SDC/WDC	<ul style="list-style-type: none"> • reviewed and confirmed Dec 2015
20. Refresh directorship of Canterbury Economic Development Co. Ltd	Feb 2015 30 Jun 2015	<ul style="list-style-type: none"> • circulate advice on process to be followed by each council • review and refresh directors 	CEF	TDC/CEs all councils	<ul style="list-style-type: none"> • Councils have all updated their directors and a meeting of the Board is planned to review the purpose of the company • CEF agreed 9 Nov 2015 that there was no need to activate the LASS at this time and that future shared service opportunities using the LASS should only be considered following formal consultation with the Mayoral Forum
21. Road management, construction, maintenance and safety (south Canterbury)	Jul 2015	Recent Governance Group (4 Mayors and CEs) confirmed commitment and resolved: <ul style="list-style-type: none"> • tenders for reseals – a single contract with separable portions for Timaru, Waimate and Mackenzie • maintenance contracts to be standardised from mid-2015 and aligned for tendering with 4 separate contracts but opportunity for tenderers to offer discounts if they win more than one contract • one Engineer to the (4) contracts to ensure consistent contract management • asset management and 30-year strategy and other initiatives aligned through technical team. 	CEF	TDC	<ul style="list-style-type: none"> • MOU: MDC, TDC and WmDC Jun 2014; ADC joined Oct 2014 • technical team formed with independent facilitator from OPUS • WtDC provided with copy of MOU and notes from meetings • reseal contract for MDC, TDC and WmDC has been let (Nov 2015) • tenders have also been let for four separate road maintenance contracts for ADC, MDC, TDC and WmDC based on a common specification. MDC and WmDC obtained benefits from a common contractor for both districts

WHAT	WHEN	TASK	WHO	VIA	STATUS
22. Asset management information and shared asset management systems	Nov 2014 Aug 2015	<ul style="list-style-type: none"> workshop of all councils and OAG to support development of 30-year infrastructure strategies for 2015 LTPs and significance and engagement policies Waugh Consulting engaged to undertake an assessment of the systems and practices used for asset management and linkages with other management systems (finance and GIS). It will also consider the context of system usage and the level of asset planning each council needs, and identify opportunities for further collaboration. a presentation to CEF / CMF – can then move to Completed / BAU 	CEF	CPF MDC	<ul style="list-style-type: none"> two workshops held 18 Aug 2014 and 4 Nov 2014 Waugh Consulting commenced work Feb 2015 and sought data from all councils in May 2015 update provided to CEF Nov 2015 report presented to CEF Feb 2016 and referred to engineering managers for consideration and report to CEF 4 Apr 2016 with recommendations for implementation
23. Procurement of business inputs, e.g. insurance	Dec 2015	<ul style="list-style-type: none"> identify insurance shared service options 	CEF	WDC	<ul style="list-style-type: none"> all councils are members of the All of Government purchasing co-operative on 9 Nov 2015 CEF discussed insurance shared service options and the LGNZ review of risk management and insurance arrangements and agreed to defer further discussion until June 2016, to coincide with completion of the LGNZ review
24. Health and safety – shared policy, audit and best practice	2014 3 rd quarter 2015	<ul style="list-style-type: none"> establish a virtual health and safety team to share policies, best practice and resources jointly recruit health and safety specialists monitor development and passage of legislation (Health and Safety Reform Bill) and associated regulation and share information to be a standing item on CEF agenda 	CEF	WDC	<ul style="list-style-type: none"> ECan, SDC, WDC signed MOU 2014; open invitation to other councils to join full-time specialists employed by ECan, SDC, WDC presentation to CEF 11 May 2015

WATCHING BRIEFS

Objective: Canterbury councils are well informed and have opportunities to submit 'one, strong Canterbury voice' on matters affecting Canterbury.

WHAT	WHEN	TASK	WHO	VIA	STATUS
25. Building (Earthquake-prone Buildings) Amendment Bill	Apr 2015	<ul style="list-style-type: none"> monitor progress of the Bill and share information 	CEF	WtDC/ CCC	<ul style="list-style-type: none"> Select Committee released an interim report on its proposed risk-based approach and allowed further submissions until 16 July 2015 the Select Committee has reported; debate on Second Reading interrupted 17 Feb 2016
26. Environmental health and public health, including food safety	Ongoing	<ul style="list-style-type: none"> maintain strategic partnership/s with DHBs and CPH prepare a submission if significant issues arise, for consideration by CMF 	CEF	HDC	<ul style="list-style-type: none"> draft regulations issued Feb 2015 – no surprises
27. Environmental reporting a. Environmental Reporting Bill b. National Monitoring System for the RMA (replaces the previous RMA survey of local authorities)	May 2015 Aug 2015	<ul style="list-style-type: none"> monitor and assess implications and cost of monitoring and reporting (formal reporting requirements commence 1 July 2015) 	CPF	ECan	<ul style="list-style-type: none"> Select Committee report due 30 Mar 2015 Environmental Reporting Act passed in Sep 2015 MfE/SNZ published first <i>Environment Aotearoa</i> report under the Act on 21 Oct 2015 MfE will now be consulting on topics to set in regulation for future reporting councils received results of MfE's NMS test run in late Dec 2014 MfE is collecting a priority information set from all local authorities for the 2014/15 financial year

WHAT	WHEN	TASK	WHO	VIA	STATUS
28. Waste management and contaminated land	2015	<ul style="list-style-type: none"> monitor signalled MfE review of the role of local government and regulation of problem wastes and agricultural chemicals share information and draft any submissions required 	CPF	ECan	<ul style="list-style-type: none"> commissioned by CPF Jan 2015 CEF agreed Nov 2015 to continue the contaminated land shared services project into 2016 and encouraged all councils to participate
29. Biodiversity and biosecurity	2015	<ul style="list-style-type: none"> monitor signalled (DoC) National Biodiversity Strategy and targets share information and lead drafting of any submissions 	CPF	ECan	<ul style="list-style-type: none"> commissioned by CPF Jan 2015 ECan reported to CPF Jan 2016 and will update CEF Apr 2016
30. CCC Resilient Cities Network initiatives	Jun 2015	<ul style="list-style-type: none"> strategy to be developed with a governance group (including representatives from Ngāi Tahu, universities and adjacent councils) to oversee its development 	CEF	CCC	<ul style="list-style-type: none"> in progress

Items that have been completed items, transitioned to business as usual or replaced by CREDS projects

WHAT	WHEN	TASK	WHO	VIA	STATUS
31. Public passenger transport planning	2014	<ul style="list-style-type: none"> greater Christchurch congestion assessment and PT options 	CEF	CEs of 4 councils	<ul style="list-style-type: none"> completed
32. Clean air	2014	<ul style="list-style-type: none"> develop a winter action plan with stronger enforcement for non-compliers, target worst emitters and continue winter warmth assistance programme implement NESAQ monitor impact on earthquake recovery 	CEF	ECan	<ul style="list-style-type: none"> Winter 2014 action plan developed LTP contains future programme of works, including Timaru
33. Business strategy and operational support; business information core software systems; data warehousing and backup	2014 and ongoing	<ul style="list-style-type: none"> identify opportunities for collaboration scoping of a Canterbury-wide, community-wide incident reporting application 	CEF	ECan	<ul style="list-style-type: none"> collaborative opportunities identified by CIOs with assistance of an external consultant are being progressed as and when time and opportunities present
34. GIS, including aerial photography and LIDAR	2014	<ul style="list-style-type: none"> enhancements to Canterbury Maps in association with LINZ as part of the Canterbury Spatial Data Infrastructure project 	CEF	ECan	<ul style="list-style-type: none"> completed
35. Road management, construction, maintenance and safety (mid- to north Canterbury)	2014	<ul style="list-style-type: none"> negotiate an MOU between Councils 	CEF	SDC	<ul style="list-style-type: none"> MOU signed Aug 2014
36. Electronic records management	Jun 2015	<ul style="list-style-type: none"> share information and identify opportunities for collaboration 	CEF	ADC	<ul style="list-style-type: none"> group is established – enables information management discussion and knowledge sharing between councils 8 councils were represented at the Dec 2014 meeting hosted by WtDC – presentations on disaster recovery (by Campbell Conservation) and a new Algim Toolkit by ADC Canterbury Records & Information Management Group (CRIMS) held a joint records management day with Archives NZ and Government Chief Privacy Office DIA on 27 Mar 2015 at Christchurch Civic Centre – also included CDHB, Lincoln University, Ministry of Justice, NZ Police, University of Canterbury, TRONT and MBIE staff
37. Land use planning, policy and development control, and strategic, place-based planning and development	2014	<ul style="list-style-type: none"> ongoing greater Christchurch collaboration; includes LURP extend partnership/s to include NZTA, CDHB, Ngāi Tahu and CERA 	CEF	CEAG	<ul style="list-style-type: none"> now BAU see also item 3

WHAT	WHEN	TASK	WHO	VIA	STATUS
38. After-hours call centre	Jun 2015	<ul style="list-style-type: none"> CCC has offered to extend its 24/7 call centre to other councils at minimal cost 	CEF	CCC	<ul style="list-style-type: none"> call centre operational for one year offer to other councils stands – contact Brendan Anstiss or Sarah Numan
39. CWMS – and irrigation infrastructure	Ongoing	<ul style="list-style-type: none"> governance zone implementation plan delivery L&WRP regional infrastructure initiatives advocacy and monitoring 	CMF	CEF/CPF	<ul style="list-style-type: none"> reported quarterly to CMF
40. Review of governance of public transport in Canterbury	Feb 2015	<ul style="list-style-type: none"> write to Minister requesting a review – focus is on greater Christchurch and TDC 	CMF	CEF	<ul style="list-style-type: none"> initiated as request to Minister, Dec 2014 CMF meeting with Hon Bridges 27 Feb 2015 review underway, led by Mike James (Ministry of Transport) at Hon Bridges' direction update to August CMF meeting February 2016: the joint committee proposal has been agreed, in principle, by the four Councils although details of the terms of reference need to be finalised
41. Regional transport	May 2015	<ul style="list-style-type: none"> develop draft joint work programme – CPF and TOG – for consideration by CEF and report to CMF and RTC 	RTC / CMF	CEF + CPF & TOG	<ul style="list-style-type: none"> at consultation stage on first draft of joint work programme Peter Winder commissioned to provide a paper on RTC structure and focus – presented to CMF 29 May 2015 picked up in CMF regional economic development strategy – strengthened mandate of and support for RTC
42. Natural hazard risk management	May 2015	<ul style="list-style-type: none"> develop a regional approach to natural hazard risk management with the TLA Planners/Emergency Management Officers Forum and report back to CPF by 31 Mar 2015 monitor natural hazards management reform (including climate change impacts, mitigation and adaptation) and possible emergence of an NPS – share information and lead drafting of any submissions required 	CMF	CPF/ECan	<ul style="list-style-type: none"> CPF commissioned Jan 2015 endorsed by CEF Feb 2015 for CMF approval as a work item Feb 2015 all TAs have agreed to work together to progress this
43. Storm water management planning and consenting	Aug 2015	<ul style="list-style-type: none"> establish a regional storm water forum – completed 2014 report back to CEF Aug 2015 	CEF	WDC/RSWF	<ul style="list-style-type: none"> forum established Aug 2014 with three workstreams (cost and affordability, technical and design best practice, regulation and process) update report to CEF Aug 2015
44. Population analysis	Oct 2014 May 2015	<ul style="list-style-type: none"> turn data to information to support development of 2015 LTPs and infrastructure strategies paper on migration dynamics 	CEF	CPF	<ul style="list-style-type: none"> report on migration dynamics provided to CEF and CMF Aug 2015

Key to acronyms

ADC Ashburton District Council
 AMs Asset Managers
 BAU Business as usual
 CCC Christchurch City Council
 CDC Canterbury Development Corporation
 C&CT Christchurch & Canterbury Tourism
 CCG Connected Canterbury Group
 CDEM Civil Defence and Emergency Management
 CDHB Canterbury District Health Board
 Canterbury Mayoral Forum work programme, 2014-16
 Updated February 2016

CEF Chief Executives Forum
 CERA Canterbury Earthquake Recovery Authority
 CIO Chief Information Officer
 CMF Canterbury Mayoral Forum

CPF Canterbury Policy Forum
 CPMG Canterbury Planning Managers Group
 CWMS Canterbury Water Management Strategy
 DoC Department of Conservation
 DP District Plan
 DWS Drinking-Water Standards for New Zealand
 ECan Environment Canterbury
 EDA Economic Development Agency
 GIS Geographic Information Systems

HDC Hurunui District Council
 KDC Kaikōura District Council
 LINZ Land Information New Zealand

LURP	Land Use Recovery Plan	RP	Regional Plan
MDC	Mackenzie District Council	RPMF	Regional Planning Managers Forum
MfE	Ministry for the Environment	RSWF	Regional Stormwater Forum
MoH	Ministry of Health	RTC	Regional Transport Committee
NESAQ	National Environmental Standards for Air Quality	SDC	Selwyn District Council
NGO	Non-governmental organisation	SNZ	Statistics New Zealand
NPS	National Monitoring System	TDC	Timaru District Council
NPS	National Policy Statement	TOG	Transport Officers Group
NZTA	New Zealand Transport Agency	UDS	Urban Development Strategy
OAG	Office of the Auditor-General	WDC	Waimakariri District Council
PMG	Canterbury Planning Managers Group	WmDC	Waimate District Council
RC	Regional Committee (CWMS)	WtDC	Waitaki District Council